

PHILADELPHIA WATER — DEPARTMENT —

FULL TITLE War Department, Corps of Engineers, U.S. Army. Schuylkill River, Wissahickon Creek, Phila., PA. to Norristown, PA. Surveyed by J. W. Thompson, Junior Engineer, Aug. to Dec. 1913. L. D. Schuman, Assistant Engineer. Plotted by J.H.J. Traced by E.L.M. In 18 sheets.

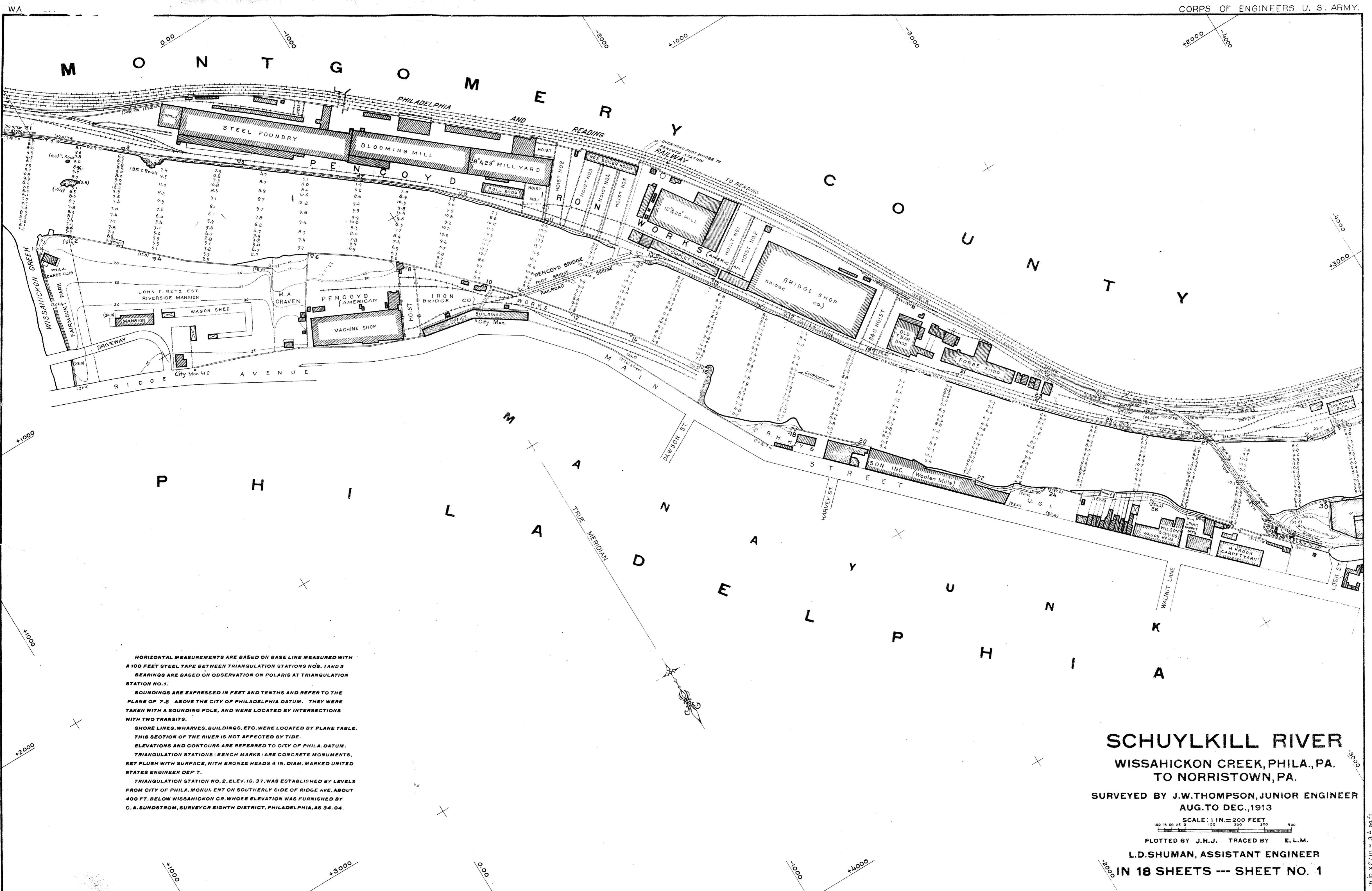
DATE 1913

EXTENT 18 maps showing Schuylkill riverfront from Wissahickon Creek to Norristown. Of the 18, five show only soundings of the river depth, three show the triangulation stations used to create the maps, one lists freshets (or floods) on the river up to 1913, and one is an index map. Sheet 1 begins at the Wissahickon, and the set continues upstream from there.

SOURCE These maps were found in the collection of the Survey and Design Bureau of the Philadelphia Streets Department. They were scanned by Adam Levine using a roll-through plotter at the Survey office, set to produce uncompressed .tiff files at a bitmap resolution. The original plans are positive blueprints, with blue ink on a white or yellowing paper. Each is 18 x 27 inches, with a scale of 1 inch = 200 feet.

This PDF was downloaded from the
PWD history website

WaterHistoryPHL



HORIZONTAL MEASUREMENTS ARE BASED ON BASE LINE MEASURED WITH A 100 FEET STEEL TAPE BETWEEN TRIANGULATION STATIONS NOS. 1 AND 3 BEARINGS ARE BASED ON OBSERVATION ON POLARIS AT TRIANGULATION STATION NO. 1.

SOUNDINGS ARE EXPRESSED IN FEET AND TENTHS AND REFER TO THE PLANE OF 7.5 ABOVE THE CITY OF PHILADELPHIA DATUM. THEY WERE TAKEN WITH A SOUNDING POLE, AND WERE LOCATED BY INTERSECTIONS WITH TWO TRANSITS.

SHORE LINES, WHARVES, BUILDINGS, ETC. WERE LOCATED BY PLANE TABLE. THIS SECTION OF THE RIVER IS NOT AFFECTED BY TIDE.

ELEVATIONS AND CONTOURS ARE REFERRED TO CITY OF PHILA. DATUM. TRIANGULATION STATIONS (BENCH MARKS) ARE CONCRETE MONUMENTS, SET FLUSH WITH SURFACE, WITH BRONZE HEADS 4 IN. DIAM. MARKED UNITED STATES ENGINEER DEP'T.

TRIANGULATION STATION NO. 2, ELEV. 15.37, WAS ESTABLISHED BY LEVELS FROM CITY OF PHILA. MONUMENT ON SOUTHERLY SIDE OF RIDGE AVE. ABOUT 400 FT. BELOW WISSAHICKON CR. WHOSE ELEVATION WAS FURNISHED BY C. A. SUNDSTROM, SURVEYOR EIGHTH DISTRICT, PHILADELPHIA, AS 34.04.

SCHUYLKILL RIVER

WISSAHICKON CREEK, PHILA., PA. TO NORRISTOWN, PA.

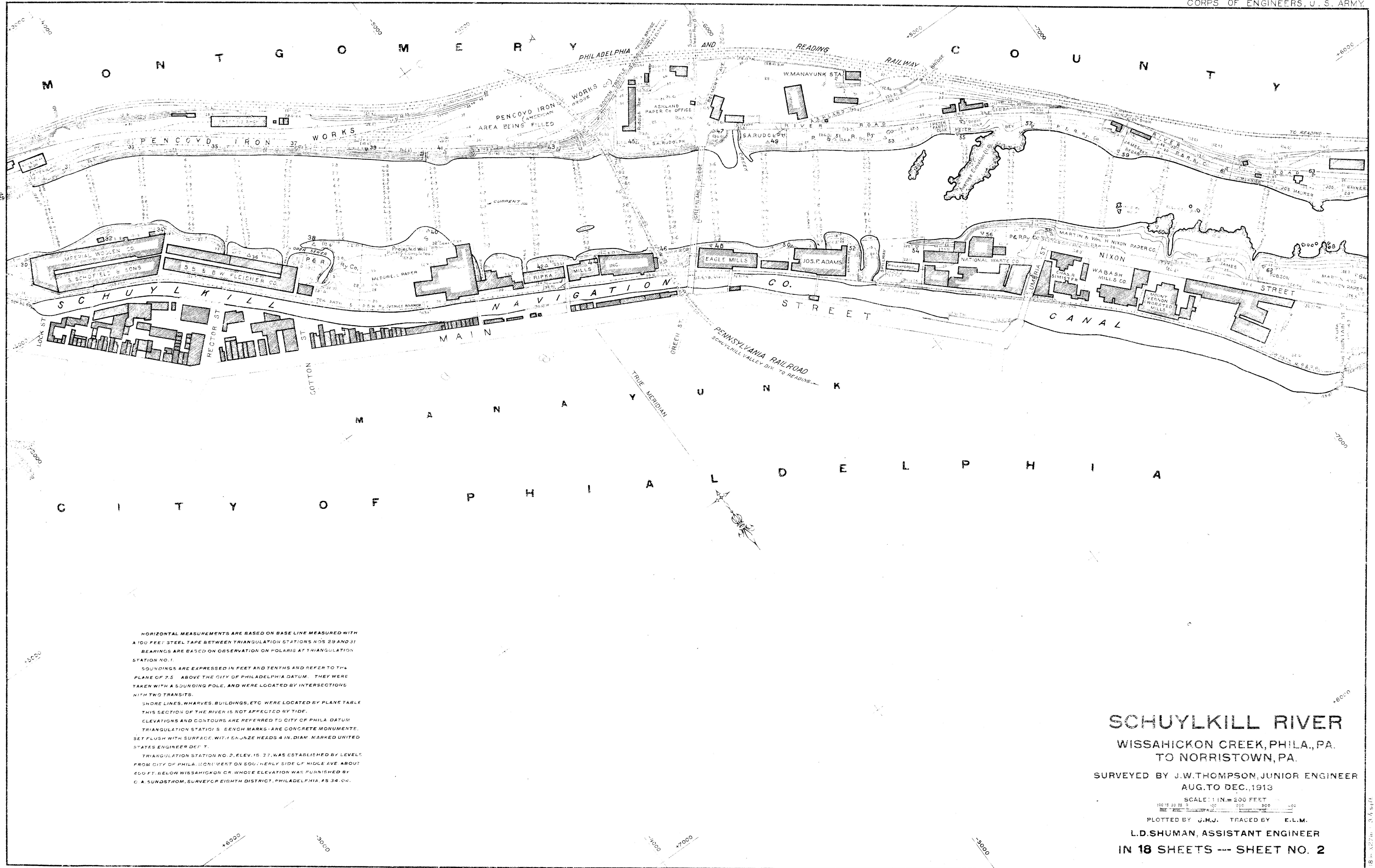
SURVEYED BY J.W. THOMPSON, JUNIOR ENGINEER
AUG. TO DEC., 1913

SCALE: 1 IN. = 200 FEET

PLOTTED BY J.H.J. TRACED BY E.L.M.

L.D. SHUMAN, ASSISTANT ENGINEER

IN 18 SHEETS --- SHEET NO. 1



HORIZONTAL MEASUREMENTS ARE BASED ON BASE LINE MEASURED WITH A 100 FEET STEEL TAPE BETWEEN TRIANGULATION STATIONS NOS 29 AND 31 BEARINGS ARE BASED ON OBSERVATION ON POLARIS AT TRIANGULATION STATION NO. 1.

SOUNDINGS ARE EXPRESSED IN FEET AND TENTHS AND REFER TO THE PLANE OF 7.5 ABOVE THE CITY OF PHILADELPHIA DATUM. THEY WERE TAKEN WITH A SOUNDING POLE, AND WERE LOCATED BY INTERSECTIONS WITH TWO TRANSITS.

SHORE LINES, WHARVES, BUILDINGS, ETC WERE LOCATED BY PLANE TABLE THIS SECTION OF THE RIVER IS NOT AFFECTED BY TIDE.

ELEVATIONS AND CONTOURS ARE REFERRED TO CITY OF PHILA. DATUM TRIANGULATION STATION 5 BENCH MARKS ARE CONCRETE MONUMENTS, SET FLUSH WITH SURFACE, WITH BRASS HEADS 4 IN. DIAM. MARKED UNITED STATES ENGINEER DEPT.

TRIANGULATION STATION NO. 2, ELEV. 15.27, WAS ESTABLISHED BY LEVELS FROM CITY OF PHILA. MONUMENT ON SOUTHERLY SIDE OF RIDGE AVE ABOUT 500 FT. BELOW WISSAHICKON CR WHOSE ELEVATION WAS FURNISHED BY C. A. SUNDSTROM, SURVEYOR EIGHTH DISTRICT, PHILADELPHIA, AS 34.04.

SCHUYLKILL RIVER

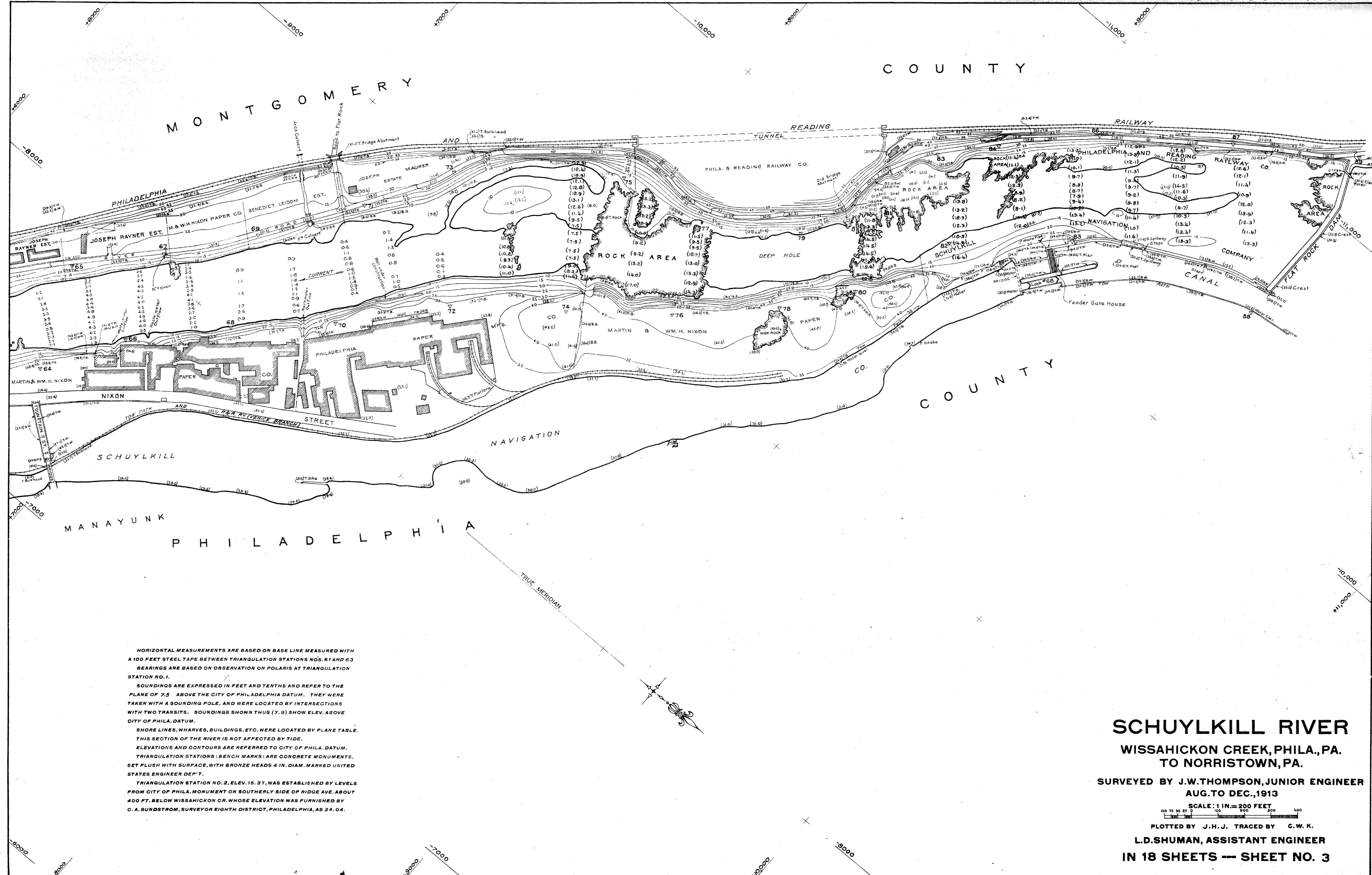
WISSAHICKON CREEK, PHILA., PA.
TO NORRISTOWN, PA.

SURVEYED BY J.W. THOMPSON, JUNIOR ENGINEER
AUG. TO DEC., 1913

SCALE: 1 IN. = 200 FEET

PLOTTED BY J.H.J. TRACED BY E.L.M.

L.D. SHUMAN, ASSISTANT ENGINEER
IN 18 SHEETS --- SHEET NO. 2



HORIZONTAL MEASUREMENTS ARE BASED ON BASE LINE MEASURED WITH A 100 FEET STEEL TAPE BETWEEN TRIANGULATION STATIONS NOS. 61 AND 63 BEARINGS ARE BASED ON OBSERVATION ON POLARIS AT TRIANGULATION STATION NO. 1.

SOUNDINGS ARE EXPRESSED IN FEET AND TENTHS AND REFER TO THE PLANE OF 7.5 ABOVE THE CITY OF PHILADELPHIA DATUM. THEY WERE TAKEN WITH A SOUNDING POLE, AND WERE LOCATED BY INTERSECTIONS WITH TWO TRANSITS. SOUNDINGS SHOWN THUS (7.9) SHOW ELEV. ABOVE CITY OF PHILA. DATUM.

SHORE LINES, WHARVES, BUILDINGS, ETC. WERE LOCATED BY PLANE TABLE. THIS SECTION OF THE RIVER IS NOT AFFECTED BY TIDE.

ELEVATIONS AND CONTOURS ARE REFERRED TO CITY OF PHILA. DATUM. TRIANGULATION STATIONS (BENCH MARKS) ARE CONCRETE MONUMENTS, SET FLUSH WITH SURFACE, WITH BRONZE HEADS 4 IN. DIAM. MARKED UNITED STATES ENGINEER DEP'T.

TRIANGULATION STATION NO. 2, ELEV. 16.37, WAS ESTABLISHED BY LEVELS FROM CITY OF PHILA. MONUMENT ON SOUTHERLY SIDE OF RIDGE AVE. ABOUT 400 FT. BELOW WISSAHICKON CR. WHOSE ELEVATION WAS FURNISHED BY C. A. SUNDBROM, SURVEYOR EIGHTH DISTRICT, PHILADELPHIA, AS 34.04.

SCHUYLKILL RIVER

WISSAHICKON CREEK, PHILA., PA. TO NORRISTOWN, PA.

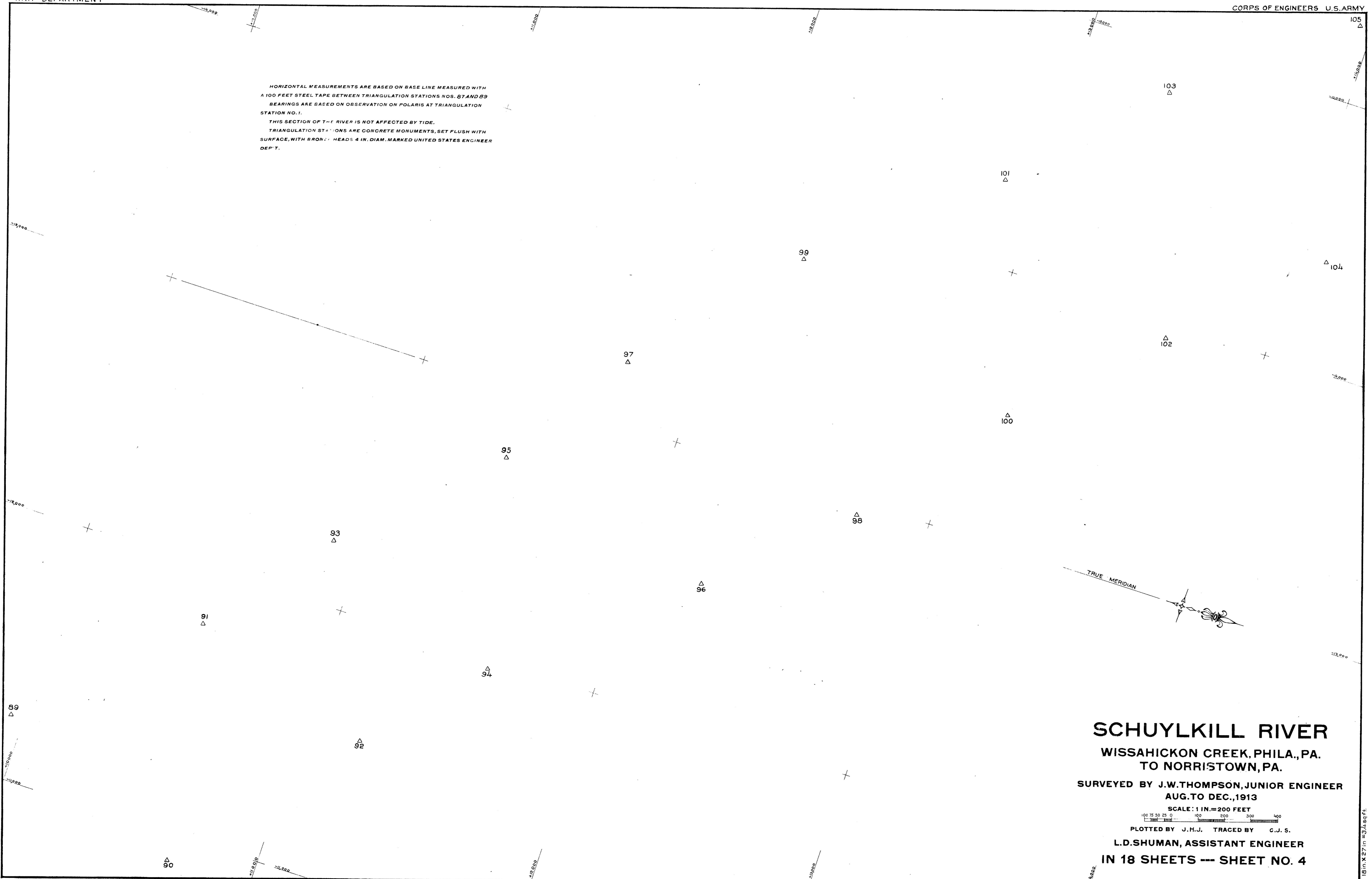
SURVEYED BY J.W. THOMPSON, JUNIOR ENGINEER
AUG. TO DEC., 1913

SCALE: 1 IN. = 200 FEET

100 200 300 400

PLOTTED BY J. H. J. TRACED BY C. W. K.
L. D. SHUMAN, ASSISTANT ENGINEER
IN 18 SHEETS -- SHEET NO. 3

HORIZONTAL MEASUREMENTS ARE BASED ON BASE LINE MEASURED WITH
 A 100 FEET STEEL TAPE BETWEEN TRIANGULATION STATIONS NOS. 87 AND 89
 BEARINGS ARE BASED ON OBSERVATION ON POLARIS AT TRIANGULATION
 STATION NO. 1.
 THIS SECTION OF THE RIVER IS NOT AFFECTED BY TIDE.
 TRIANGULATION STATIONS ARE CONCRETE MONUMENTS, SET FLUSH WITH
 SURFACE, WITH BRONZE HEADS 4 IN. DIAM. MARKED UNITED STATES ENGINEER
 DEPT.

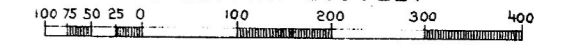


SCHUYLKILL RIVER

WISSAHICKON CREEK, PHILA., PA.
 TO NORRISTOWN, PA.

SURVEYED BY J.W. THOMPSON, JUNIOR ENGINEER
 AUG. TO DEC., 1913

SCALE: 1 IN. = 200 FEET

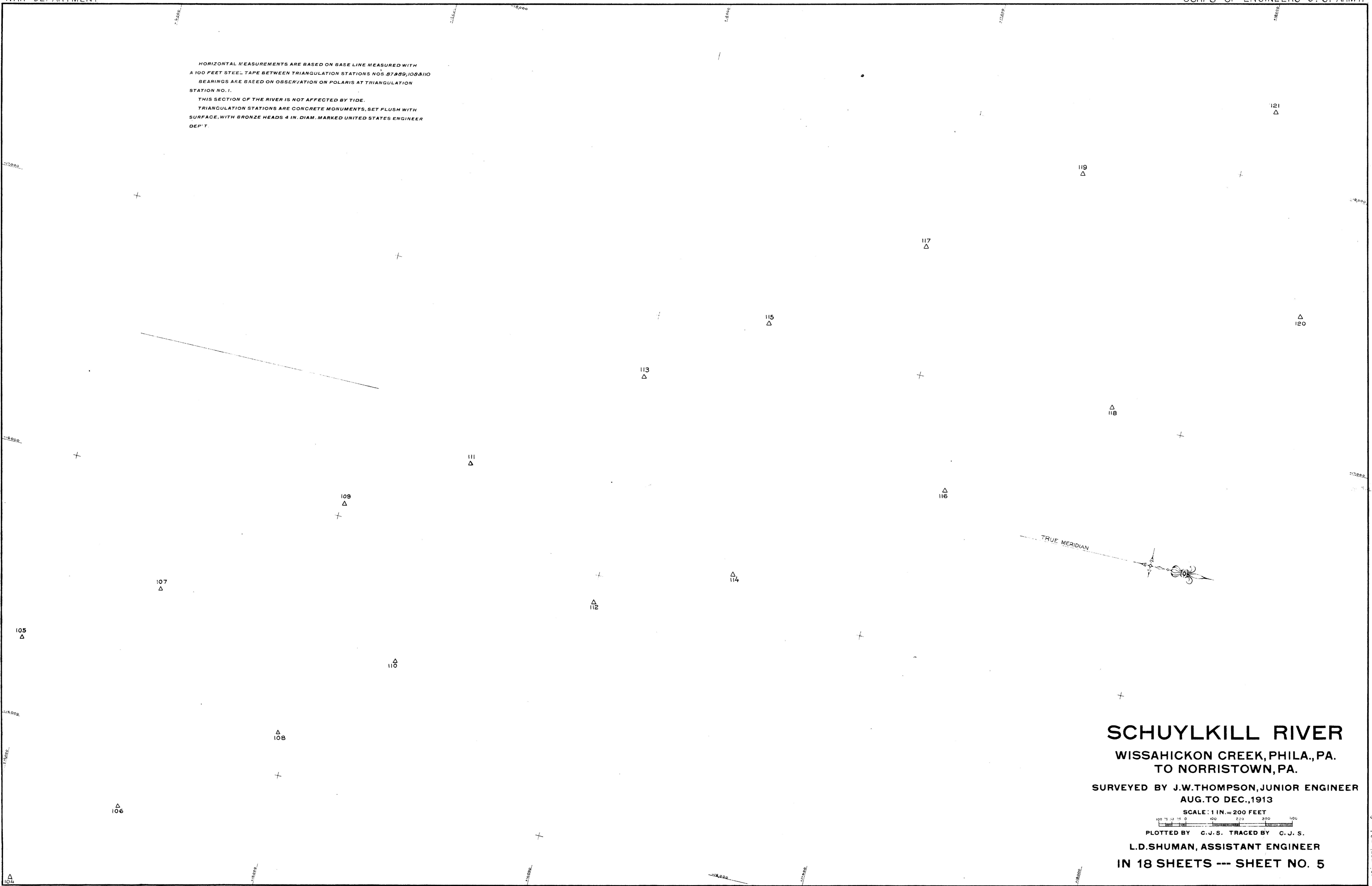


PLOTTED BY J.H.J. TRACED BY C.J.S.

L.D. SHUMAN, ASSISTANT ENGINEER

IN 18 SHEETS --- SHEET NO. 4

HORIZONTAL MEASUREMENTS ARE BASED ON BASE LINE MEASURED WITH
 A 100 FEET STEEL TAPE BETWEEN TRIANGULATION STATIONS NOS. 87209, 102410
 BEARINGS ARE BASED ON OBSERVATION ON POLARIS AT TRIANGULATION
 STATION NO. 1.
 THIS SECTION OF THE RIVER IS NOT AFFECTED BY TIDE.
 TRIANGULATION STATIONS ARE CONCRETE MONUMENTS, SET FLUSH WITH
 SURFACE, WITH BRONZE HEADS 4 IN. DIAM. MARKED UNITED STATES ENGINEER
 DEPT.



SCHUYLKILL RIVER

WISSAHICKON CREEK, PHILA., PA.
TO NORRISTOWN, PA.

SURVEYED BY J.W. THOMPSON, JUNIOR ENGINEER
AUG. TO DEC., 1913

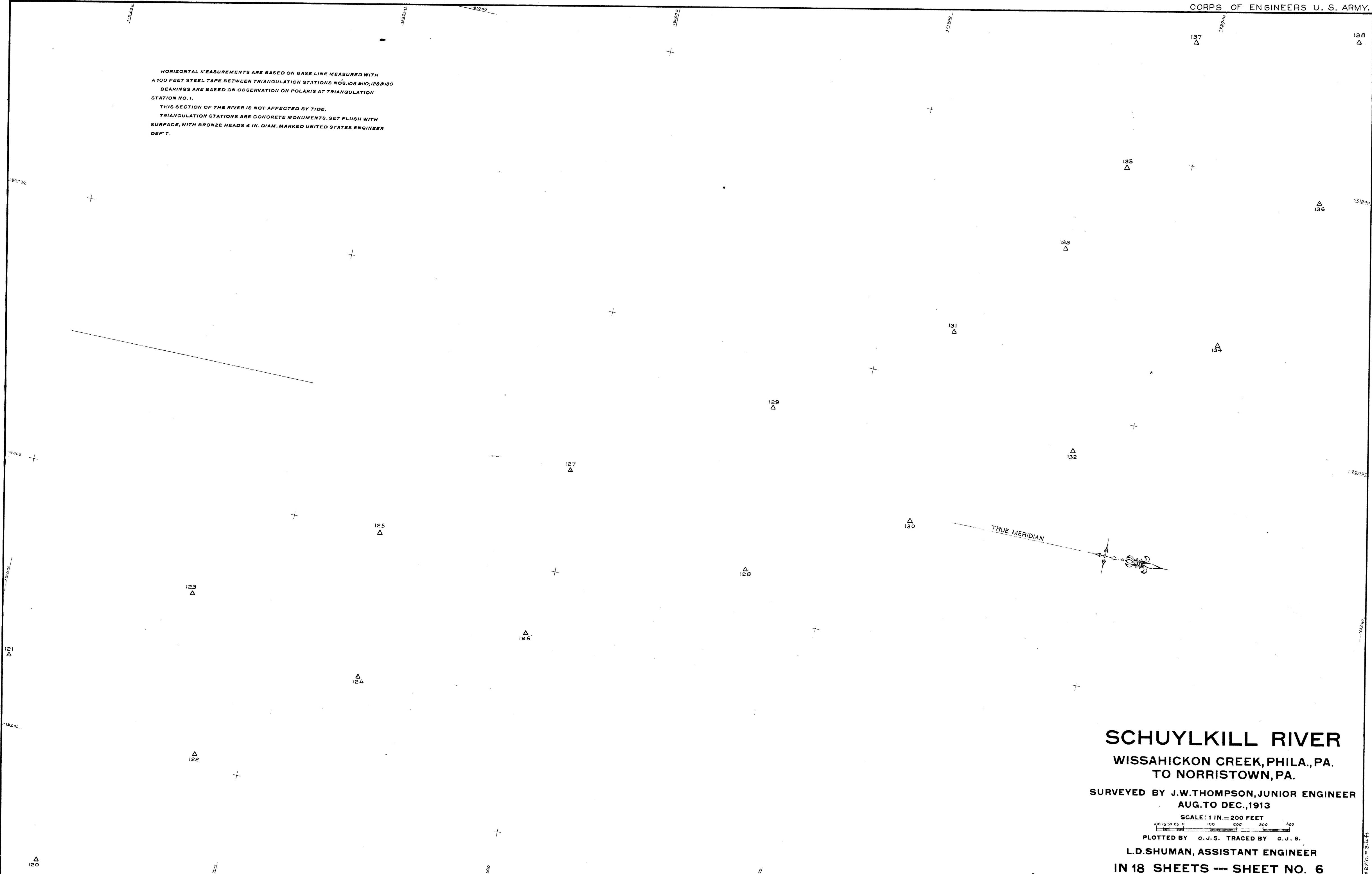
SCALE: 1 IN. = 200 FEET



PLOTTED BY C. J. S. TRACED BY C. J. S.

L.D. SHUMAN, ASSISTANT ENGINEER
IN 18 SHEETS --- SHEET NO. 5

HORIZONTAL MEASUREMENTS ARE BASED ON BASE LINE MEASURED WITH
 A 100 FEET STEEL TAPE BETWEEN TRIANGULATION STATIONS NOS. 108 #110, 128 #130
 BEARINGS ARE BASED ON OBSERVATION ON POLARIS AT TRIANGULATION
 STATION NO. 1.
 THIS SECTION OF THE RIVER IS NOT AFFECTED BY TIDE.
 TRIANGULATION STATIONS ARE CONCRETE MONUMENTS, SET FLUSH WITH
 SURFACE, WITH BRONZE HEADS 4 IN. DIAM. MARKED UNITED STATES ENGINEER
 DEPT. T.



SCHUYLKILL RIVER

WISSAHICKON CREEK, PHILA., PA.
 TO NORRISTOWN, PA.

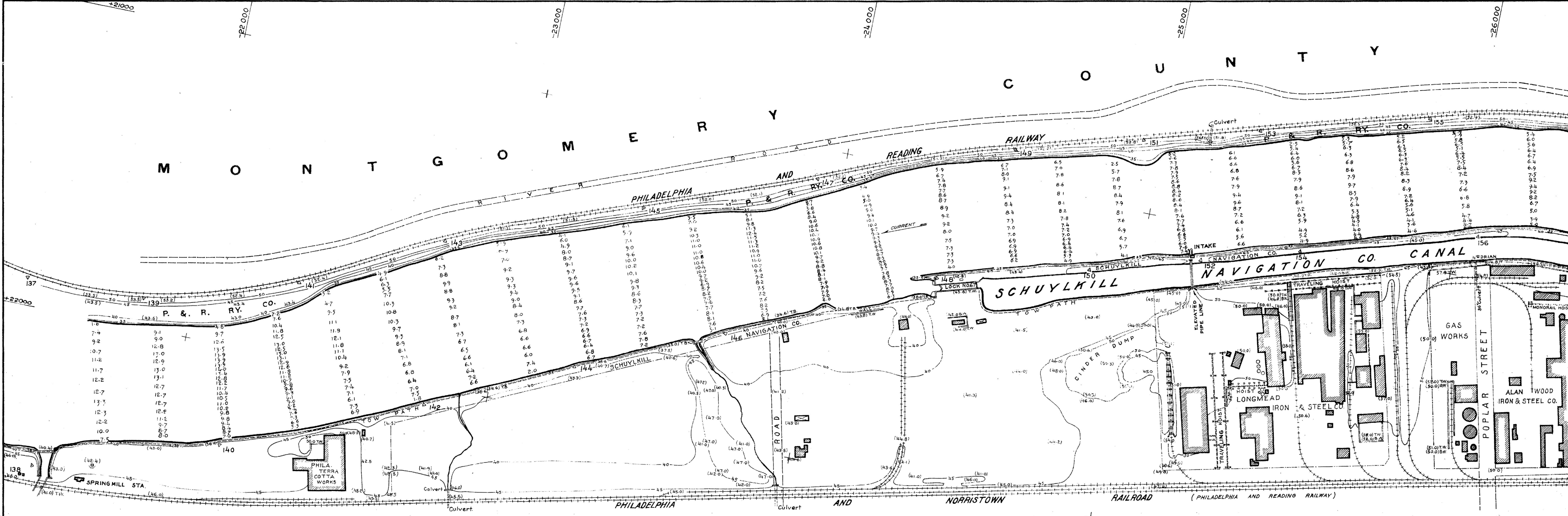
SURVEYED BY J.W. THOMPSON, JUNIOR ENGINEER
 AUG. TO DEC., 1913

SCALE: 1 IN. = 200 FEET

100 75 50 25 0 100 200 300 400

PLOTTED BY C.J.S. TRACED BY C.J.S.

L.D. SHUMAN, ASSISTANT ENGINEER
 IN 18 SHEETS --- SHEET NO. 6



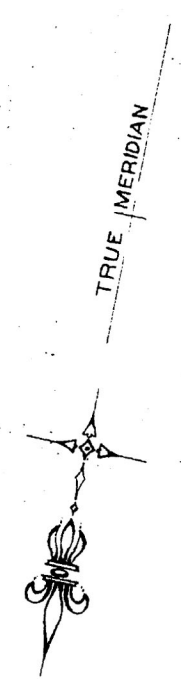
HORIZONTAL MEASUREMENTS ARE BASED ON BASE LINE MEASURED WITH A 100 FEET STEEL TAPE BETWEEN TRIANGULATION STATIONS NOS. 1202190, 1411445 BEARINGS ARE BASED ON OBSERVATION ON POLARIS AT TRIANGULATION STATION NO. 1.

SOUNDINGS ARE EXPRESSED IN FEET AND TENTHS AND REFER TO THE PLANE OF 33.7' ABOVE THE CITY OF PHILADELPHIA DATUM. THEY WERE TAKEN WITH A SOUNDING POLE, AND WERE LOCATED BY INTERSECTIONS WITH TWO TRANSITS.

SHORE LINES, WHARVES, BUILDINGS, ETC. WERE LOCATED BY PLANE TABLE. THIS SECTION OF THE RIVER IS NOT AFFECTED BY TIDE.

ELEVATIONS AND CONTOURS ARE REFERRED TO CITY OF PHILA. DATUM. TRIANGULATION STATIONS (BENCH MARKS) ARE CONCRETE MONUMENTS, SET FLUSH WITH SURFACE, WITH BRONZE HEADS 4 IN. DIAM. MARKED UNITED STATES ENGINEER DEPT.

TRIANGULATION STATION NO. 140, ELEV. 39.996, WAS ESTABLISHED BY LEVELS FROM P. R. R. B. M. AT SPRING MILL STATION, ELEV. 56.80 P. R. R. DATUM FURNISHED BY P. R. R. AND REDUCED TO ELEV. 51.57 CITY OF PHILA. DATUM BY COMPARISON OF TWO SYSTEMS.



SCHUYLKILL RIVER

WISSAHICKON CREEK, PHILA., PA. TO NORRISTOWN, PA.

SURVEYED BY J.W. THOMPSON, JUNIOR ENGINEER
AUG. TO DEC., 1913

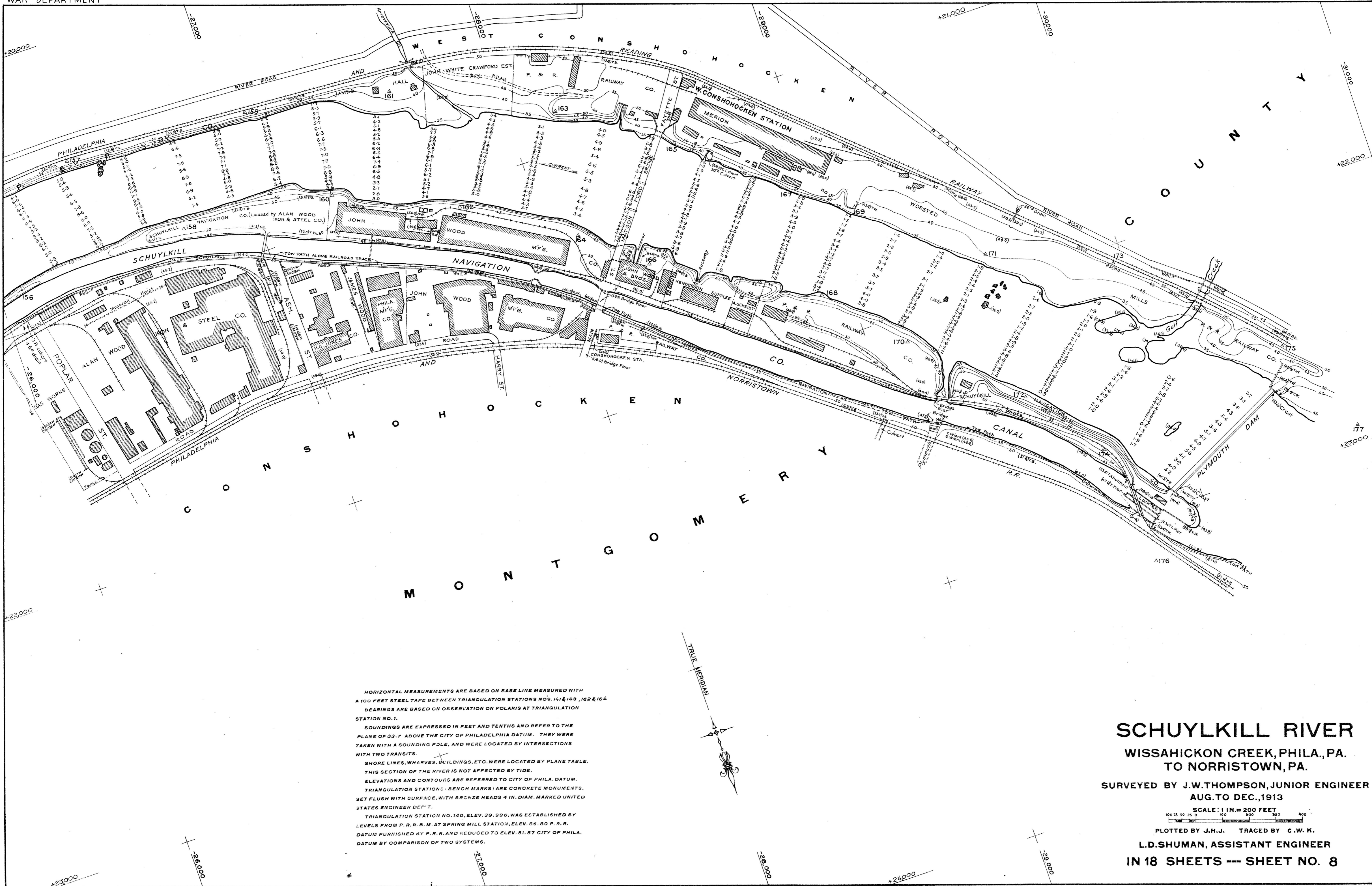
SCALE: 1 IN. = 200 FEET

100 75 50 25 0 100 200 300 400

PLOTTED BY J.H.J. TRACED BY E.L.M.

L.D. SHUMAN, ASSISTANT ENGINEER

IN 18 SHEETS --- SHEET NO. 7



HORIZONTAL MEASUREMENTS ARE BASED ON BASE LINE MEASURED WITH A 100 FEET STEEL TAPE BETWEEN TRIANGULATION STATIONS NOS. 141 & 143, 162 & 164. BEARINGS ARE BASED ON OBSERVATION ON POLARIS AT TRIANGULATION STATION NO. 1.

SOUNDINGS ARE EXPRESSED IN FEET AND TENTHS AND REFER TO THE PLANE OF 33.7 ABOVE THE CITY OF PHILADELPHIA DATUM. THEY WERE TAKEN WITH A SOUNDING POLE, AND WERE LOCATED BY INTERSECTIONS WITH TWO TRANSITS.

SHORE LINES, WHARVES, BUILDINGS, ETC. WERE LOCATED BY PLANE TABLE. THIS SECTION OF THE RIVER IS NOT AFFECTED BY TIDE.

ELEVATIONS AND CONTOURS ARE REFERRED TO CITY OF PHILA. DATUM.

TRIANGULATION STATIONS - BENCH MARKS ARE CONCRETE MONUMENTS, SET FLUSH WITH SURFACE, WITH BRONZE HEADS 4 IN. DIAM. MARKED UNITED STATES ENGINEER DEPT.

TRIANGULATION STATION NO. 140, ELEV. 39.996, WAS ESTABLISHED BY LEVELS FROM P. R. R. B. M. AT SPRING MILL STATION, ELEV. 56.80 P. R. R. DATUM FURNISHED BY P. R. R. AND REDUCED TO ELEV. 61.67 CITY OF PHILA. DATUM BY COMPARISON OF TWO SYSTEMS.

SCHUYLKILL RIVER

WISSAHICKON CREEK, PHILA., PA.
TO NORRISTOWN, PA.

SURVEYED BY J.W. THOMPSON, JUNIOR ENGINEER
AUG. TO DEC., 1913

SCALE: 1 IN. = 200 FEET

PLOTTED BY J.H.J. TRACED BY C.W.K.

L.D. SHUMAN, ASSISTANT ENGINEER
IN 18 SHEETS --- SHEET NO. 8

1. This map is a reproduction of the original map
 2. and is not to be used for any other purpose
 3. than that for which it was prepared.
 4. The original map is the property of the
 5. Corps of Engineers and is loaned to you
 6. for your use only. It is to be returned
 7. to the office of origin when no longer
 8. needed.



SCHUYLKILL RIVER
 WISSAHICKON CREEK, PHILA., PA.
 TO NORRISTOWN, PA.

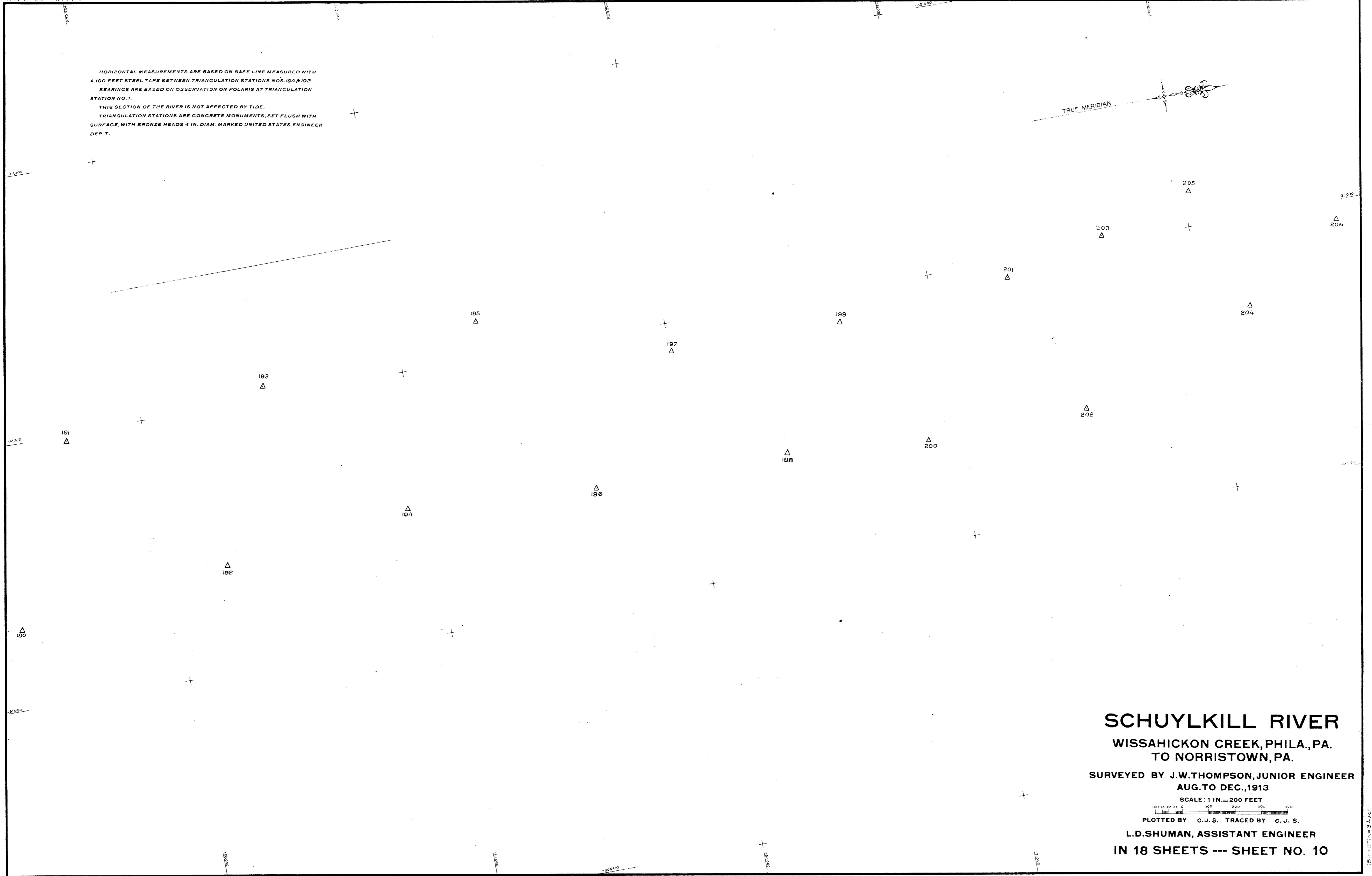
SURVEYED BY J.W. THOMPSON, JUNIOR ENGINEER
 AUG. TO DEC., 1913

SCALE: 1 IN. = 200 FEET

PLOTTED BY C.J.S. TRACED BY C.J.S.

L.D. SHUMAN, ASSISTANT ENGINEER
 IN 18 SHEETS --- SHEET NO. 9

HORIZONTAL MEASUREMENTS ARE BASED ON BASE LINE MEASURED WITH
 A 100 FEET STEEL TAPE BETWEEN TRIANGULATION STATIONS NOS. 190 & 192
 BEARINGS ARE BASED ON OBSERVATION ON POLARIS AT TRIANGULATION
 STATION NO. 1.
 THIS SECTION OF THE RIVER IS NOT AFFECTED BY TIDE.
 TRIANGULATION STATIONS ARE CONCRETE MONUMENTS, SET FLUSH WITH
 SURFACE, WITH BRONZE HEADS 4 IN. DIAM. MARKED UNITED STATES ENGINEER
 DEP'T.



SCHUYLKILL RIVER

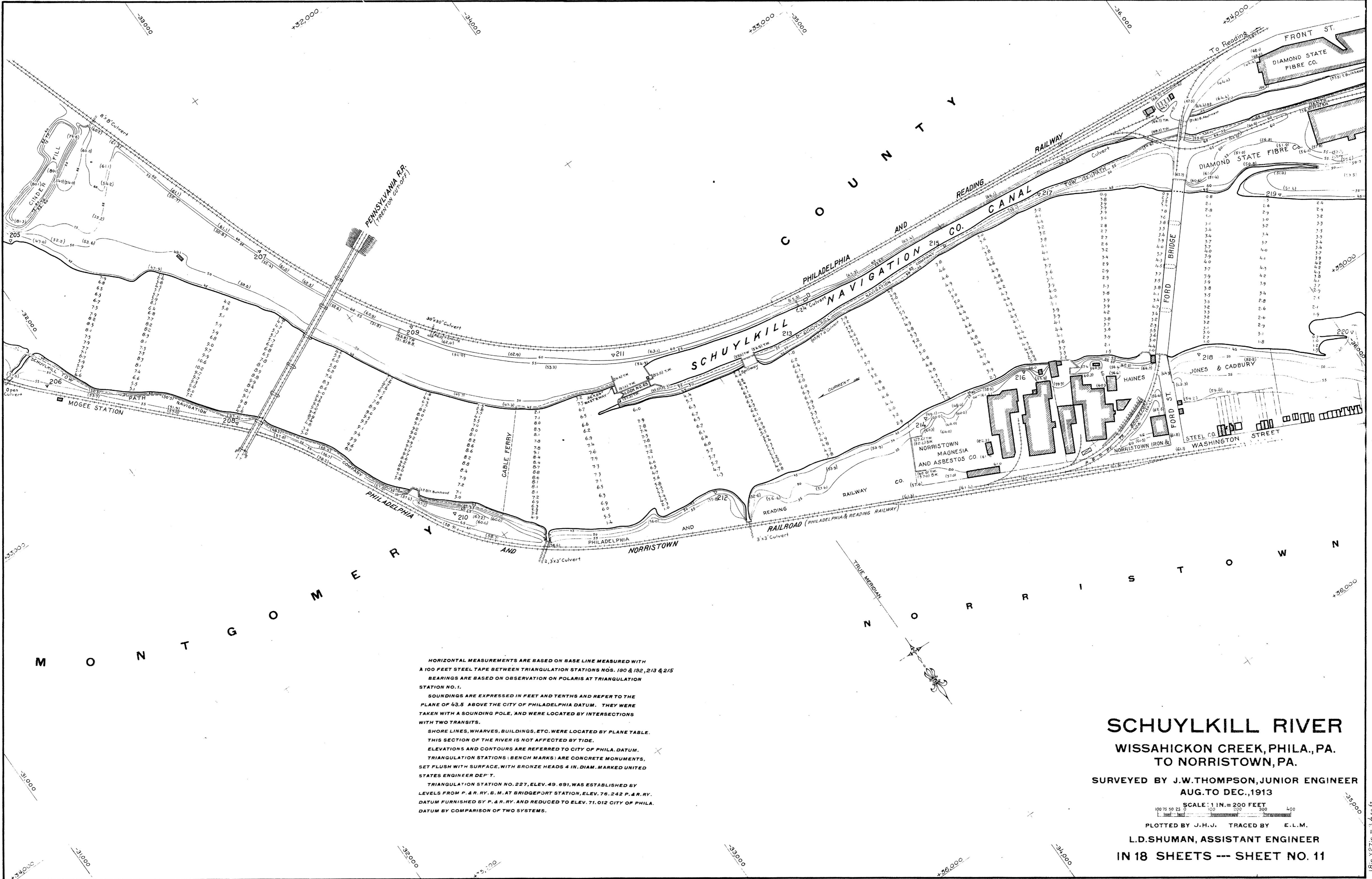
WISSAHICKON CREEK, PHILA., PA.
TO NORRISTOWN, PA.

SURVEYED BY J.W. THOMPSON, JUNIOR ENGINEER
AUG. TO DEC., 1913

SCALE: 1 IN. = 200 FEET

100 75 50 25 0 100 200 300 400
 PLOTTED BY C. J. S. TRACED BY C. J. S.

L.D. SHUMAN, ASSISTANT ENGINEER
IN 18 SHEETS --- SHEET NO. 10



HORIZONTAL MEASUREMENTS ARE BASED ON BASE LINE MEASURED WITH A 100 FEET STEEL TAPE BETWEEN TRIANGULATION STATIONS NOS. 190 & 192, 213 & 215. BEARINGS ARE BASED ON OBSERVATION ON POLARIS AT TRIANGULATION STATION NO. 1.

SOUNDINGS ARE EXPRESSED IN FEET AND TENTHS AND REFER TO THE PLANE OF 43.5 ABOVE THE CITY OF PHILADELPHIA DATUM. THEY WERE TAKEN WITH A SOUNDING POLE, AND WERE LOCATED BY INTERSECTIONS WITH TWO TRANSITS.

SHORE LINES, WHARVES, BUILDINGS, ETC. WERE LOCATED BY PLANE TABLE. THIS SECTION OF THE RIVER IS NOT AFFECTED BY TIDE.

ELEVATIONS AND CONTOURS ARE REFERRED TO CITY OF PHILA. DATUM. TRIANGULATION STATIONS (BENCH MARKS) ARE CONCRETE MONUMENTS, SET FLUSH WITH SURFACE, WITH BRONZE HEADS 4 IN. DIAM. MARKED UNITED STATES ENGINEER DEP'T.

TRIANGULATION STATION NO. 227, ELEV. 49.691, WAS ESTABLISHED BY LEVELS FROM P. & R. RY. B. M. AT BRIDGEPORT STATION, ELEV. 76.242 P. & R. RY. DATUM FURNISHED BY P. & R. RY. AND REDUCED TO ELEV. 71.012 CITY OF PHILA. DATUM BY COMPARISON OF TWO SYSTEMS.

SCHUYLKILL RIVER

WISSAHICKON CREEK, PHILA., PA. TO NORRISTOWN, PA.

SURVEYED BY J.W. THOMPSON, JUNIOR ENGINEER
AUG. TO DEC., 1913

SCALE: 1 IN. = 200 FEET

PLOTTED BY J.H.J. TRACED BY E.L.M.

L.D. SHUMAN, ASSISTANT ENGINEER
IN 18 SHEETS --- SHEET NO. 11

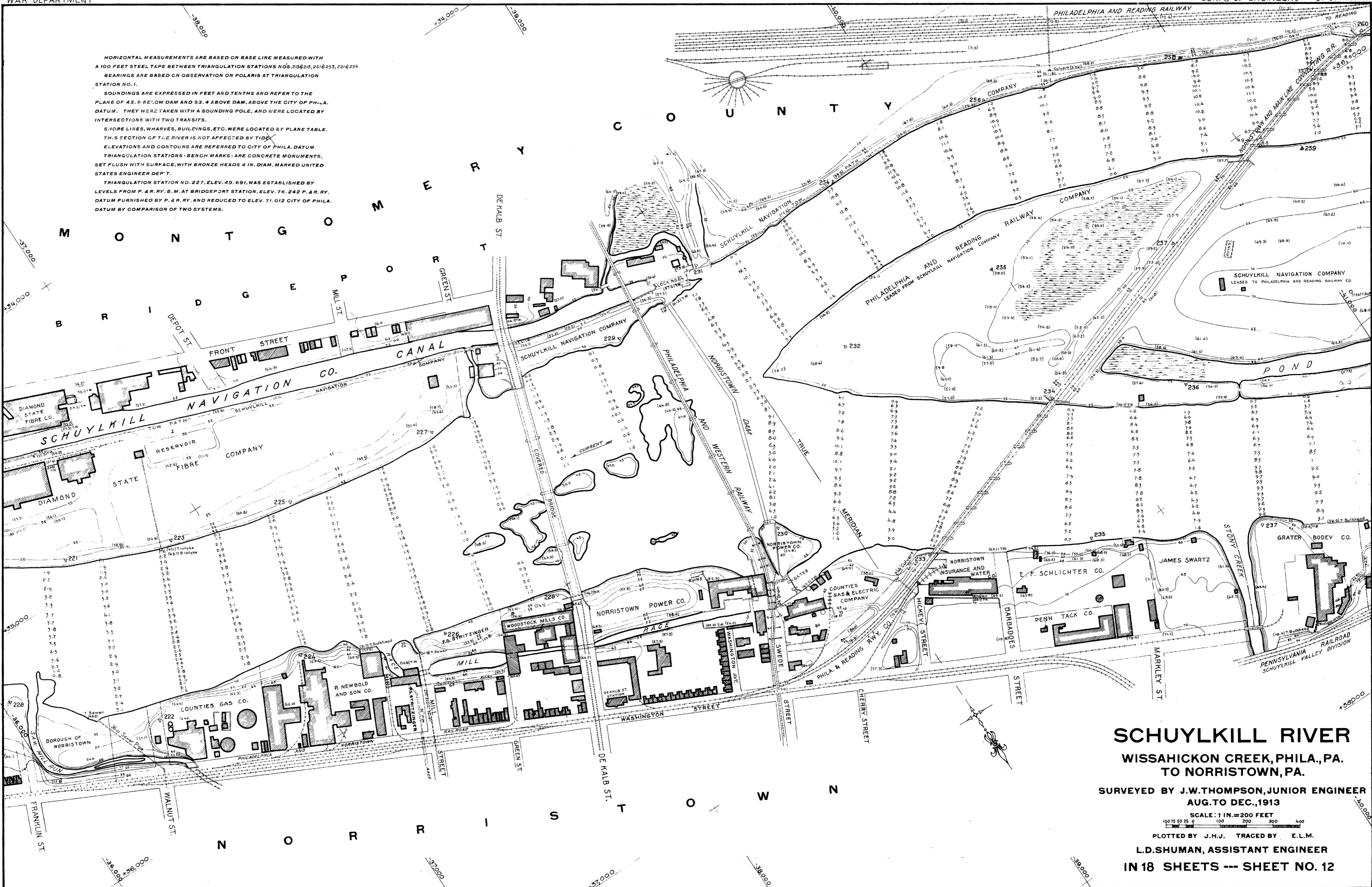
HORIZONTAL MEASUREMENTS ARE BASED ON BASE LINE MEASURED WITH A 100 FEET STEEL TAPE BETWEEN TRIANGULATION STATIONS NOS. 213 & 215, 251 & 253, 231 & 254. BEARINGS ARE BASED ON OBSERVATION ON POLARIS AT TRIANGULATION STATION NO. 1.

SOUNDINGS ARE EXPRESSED IN FEET AND TENTHS AND REFER TO THE PLANE OF 43.5 FEET LOW DAM AND 53.4 ABOVE DAM, ABOVE THE CITY OF PHILA. DATUM. THEY WERE TAKEN WITH A SOUNDING POLE, AND WERE LOCATED BY INTERSECTIONS WITH TWO TRANSITS.

SHORE LINES, WHARVES, BUILDINGS, ETC. WERE LOCATED BY PLANE TABLE. THIS SECTION OF THE RIVER IS NOT AFFECTED BY TIDE.

ELEVATIONS AND CONTOURS ARE REFERRED TO CITY OF PHILA. DATUM. TRIANGULATION STATIONS BENCH MARKS ARE CONCRETE MONUMENTS, SET FLUSH WITH SURFACE, WITH BRONZE HEADS 4 IN. DIAM. MARKED UNITED STATES ENGINEER DEP'T.

TRIANGULATION STATION NO. 227, ELEV. 49.691, WAS ESTABLISHED BY LEVELS FROM P. & R. RY. B. M. AT BRIDGEPORT STATION, ELEV. 76.242 P. & R. RY. DATUM FURNISHED BY P. & R. RY. AND REDUCED TO ELEV. 71.012 CITY OF PHILA. DATUM BY COMPARISON OF TWO SYSTEMS.



SCHUYLKILL RIVER

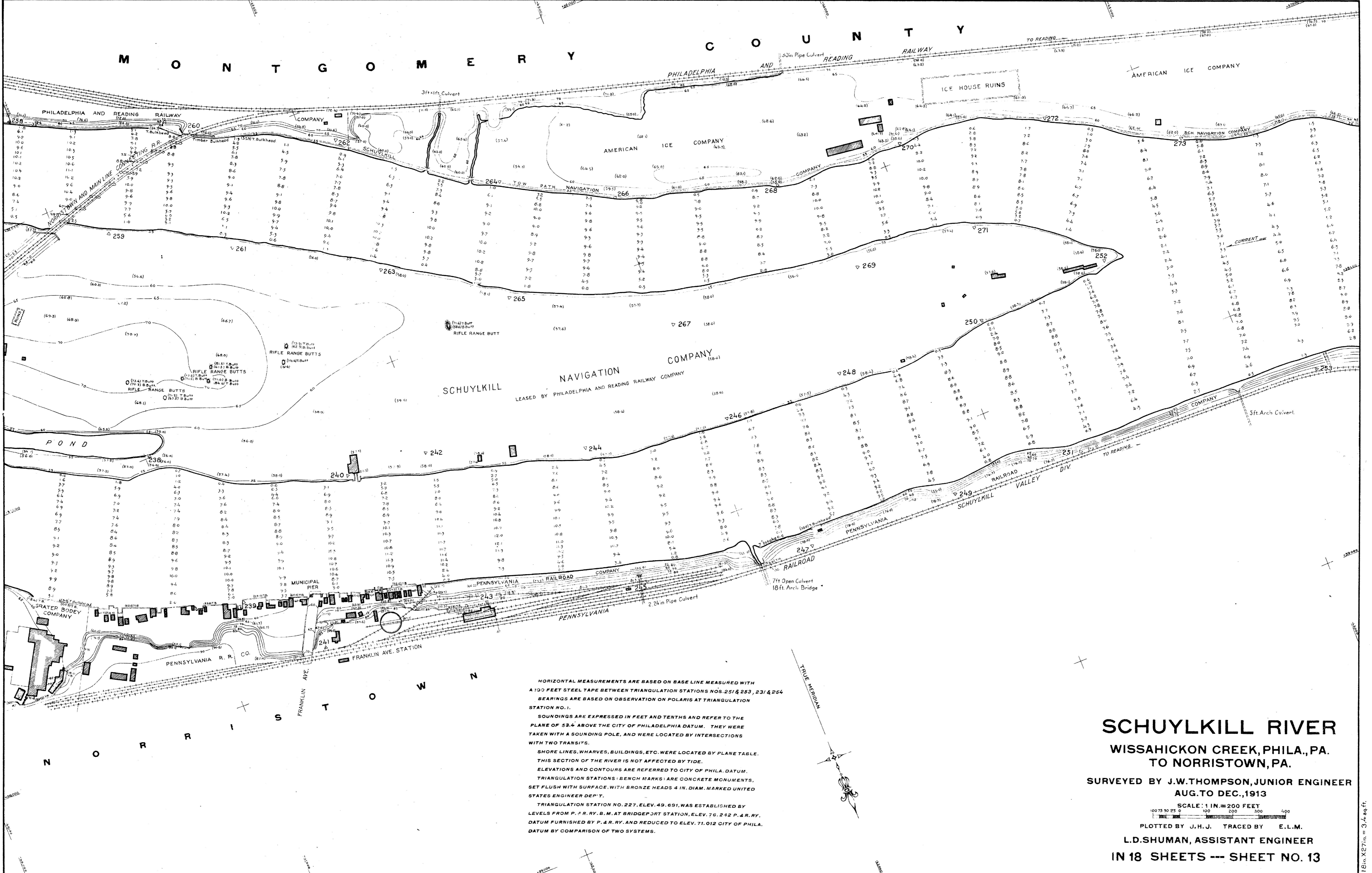
WISSAHICKON CREEK, PHILA., PA. TO NORRISTOWN, PA.

SURVEYED BY J.W. THOMPSON, JUNIOR ENGINEER
AUG. TO DEC., 1913

SCALE: 1 IN. = 200 FEET

PLOTTED BY J.H.J. TRACED BY E.L.M.

L.D. SHUMAN, ASSISTANT ENGINEER
IN 18 SHEETS --- SHEET NO. 12



HORIZONTAL MEASUREMENTS ARE BASED ON BASE LINE MEASURED WITH A 100 FEET STEEL TAPE BETWEEN TRIANGULATION STATIONS NOS. 251 & 253, 231 & 254 BEARINGS ARE BASED ON OBSERVATION ON POLARIS AT TRIANGULATION STATION NO. 1.

SOUNDINGS ARE EXPRESSED IN FEET AND TENTHS AND REFER TO THE PLANE OF 53.4 ABOVE THE CITY OF PHILADELPHIA DATUM. THEY WERE TAKEN WITH A SOUNDING POLE, AND WERE LOCATED BY INTERSECTIONS WITH TWO TRANSITS.

SHORE LINES, WHARVES, BUILDINGS, ETC. WERE LOCATED BY PLANE TABLE. THIS SECTION OF THE RIVER IS NOT AFFECTED BY TIDE.

ELEVATIONS AND CONTOURS ARE REFERRED TO CITY OF PHILA. DATUM. TRIANGULATION STATIONS (BENCH MARKS) ARE CONCRETE MONUMENTS, SET FLUSH WITH SURFACE, WITH BRONZE HEADS 4 IN. DIAM. MARKED UNITED STATES ENGINEER DEP'T.

TRIANGULATION STATION NO. 227, ELEV. 49.691, WAS ESTABLISHED BY LEVELS FROM P. & R. R. B.M. AT BRIDGEPORT STATION, ELEV. 76.242 P. & R. R. DATUM FURNISHED BY P. & R. RY. AND REDUCED TO ELEV. 71.012 CITY OF PHILA. DATUM BY COMPARISON OF TWO SYSTEMS.

SCHUYLKILL RIVER

WISSAHICKON CREEK, PHILA., PA.
TO NORRISTOWN, PA.

SURVEYED BY J.W. THOMPSON, JUNIOR ENGINEER
AUG. TO DEC., 1913

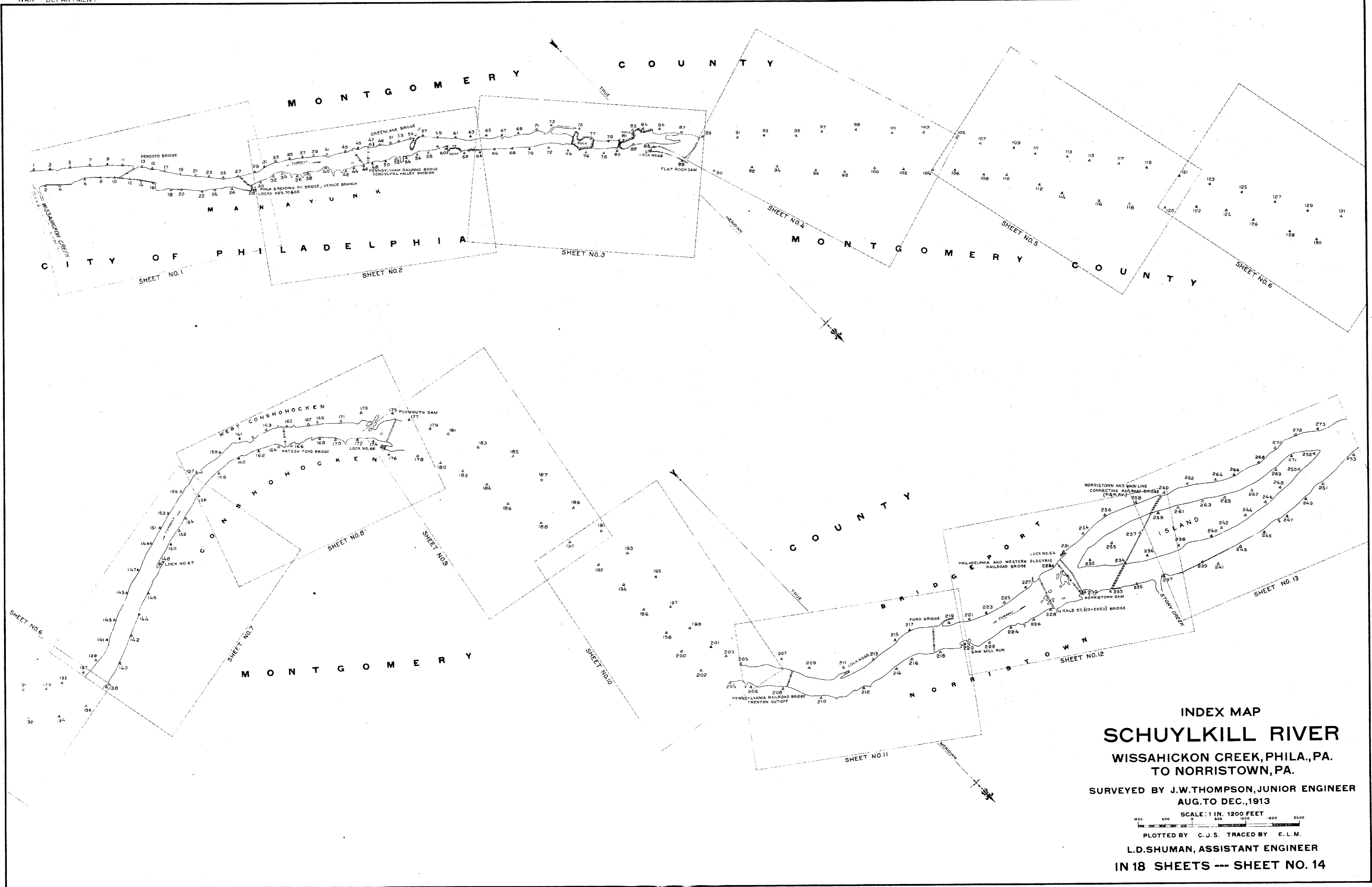
SCALE: 1 IN. = 200 FEET

100 75 50 25 0 100 200 300 400

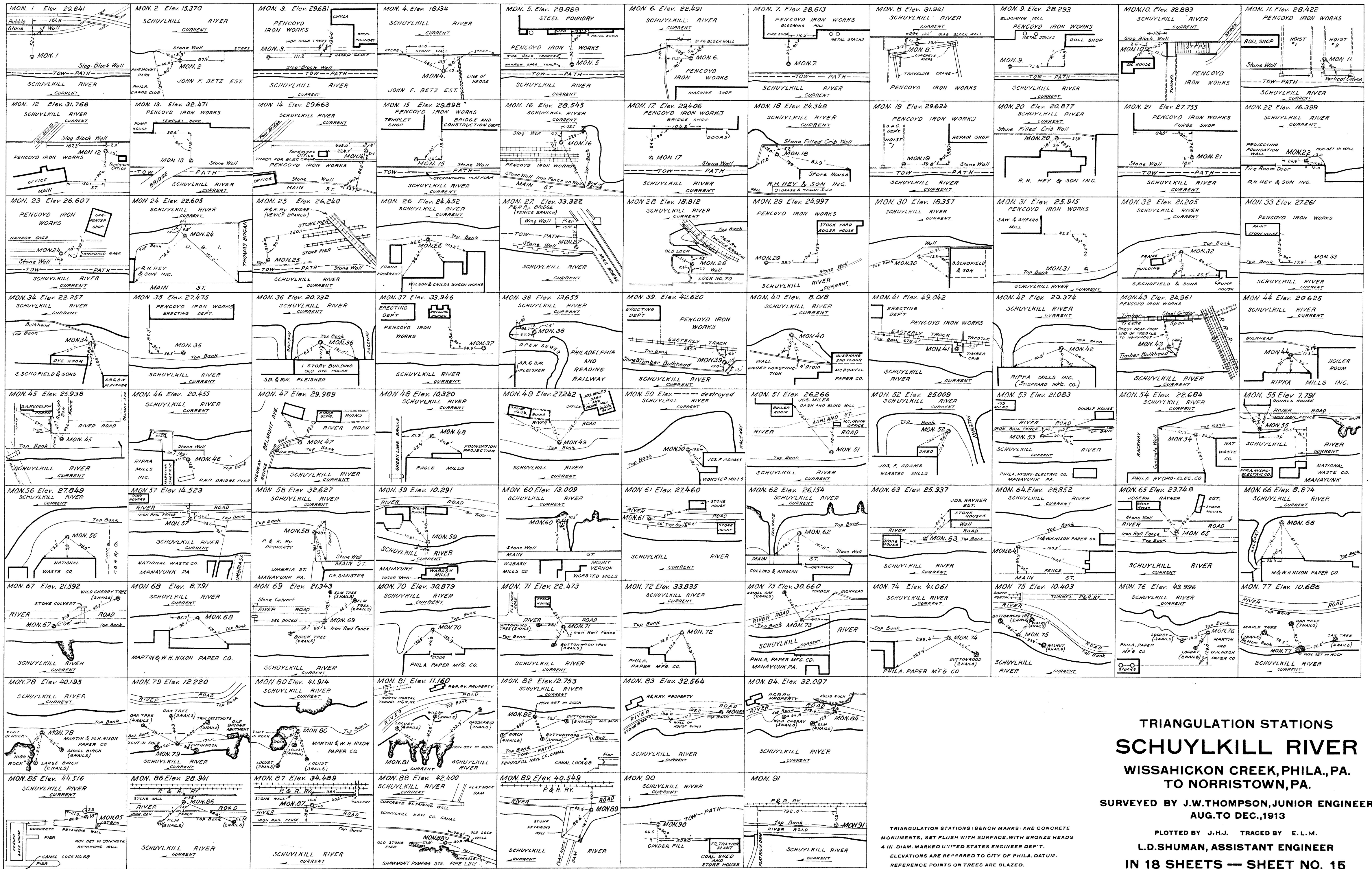
PLOTTED BY J.H.U. TRACED BY E.L.M.

L.D. SHUMAN, ASSISTANT ENGINEER

IN 18 SHEETS --- SHEET NO. 13



18 sheets in 31 sheets



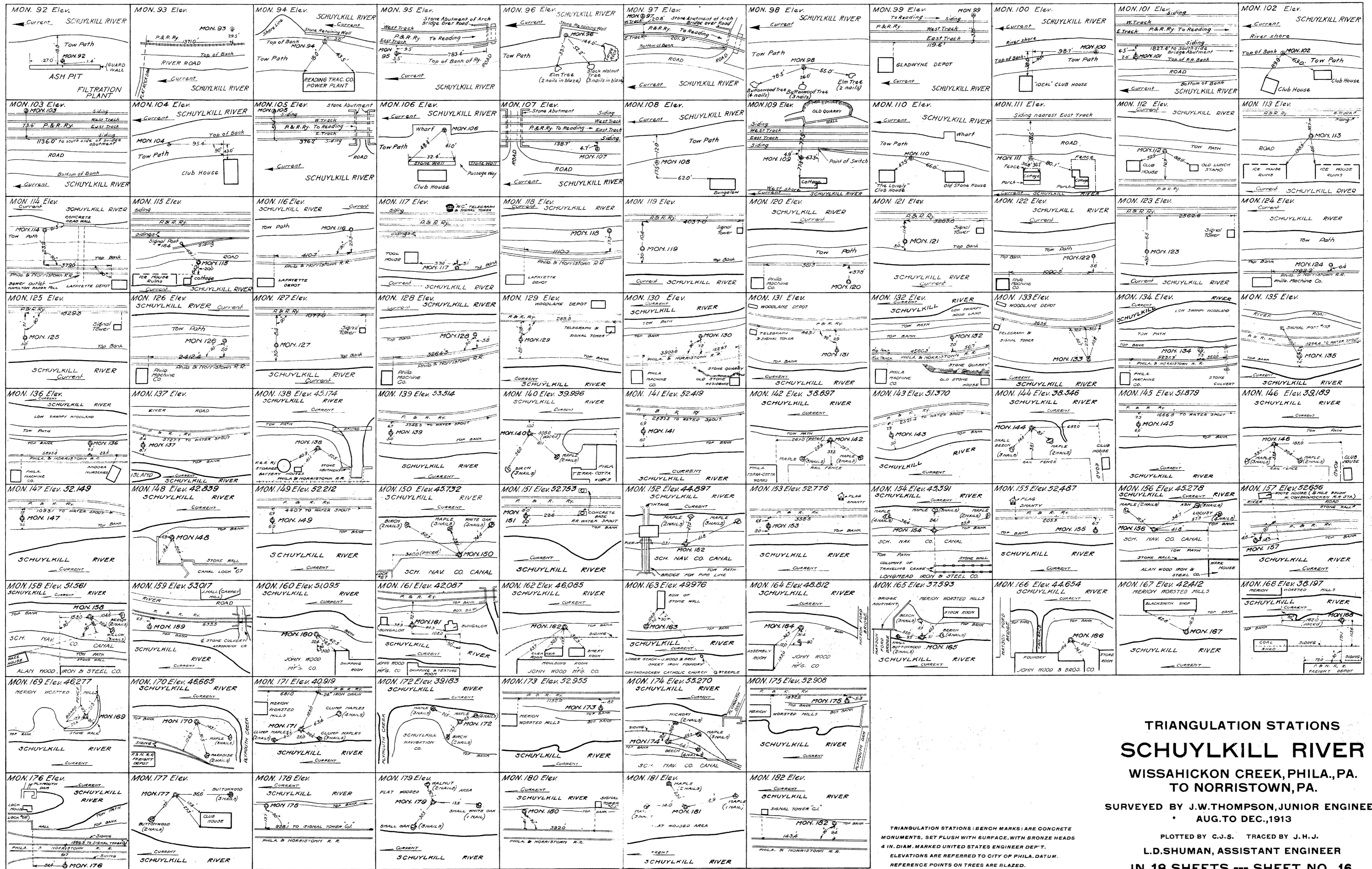
TRIANGULATION STATIONS
SCHUYLKILL RIVER
 WISSAHICKON CREEK, PHILA., PA.
 TO NORRISTOWN, PA.

SURVEYED BY J.W. THOMPSON, JUNIOR ENGINEER
 AUG. TO DEC., 1913

PLOTTED BY J.H.J. TRACED BY E.L.M.
 L.D. SHUMAN, ASSISTANT ENGINEER

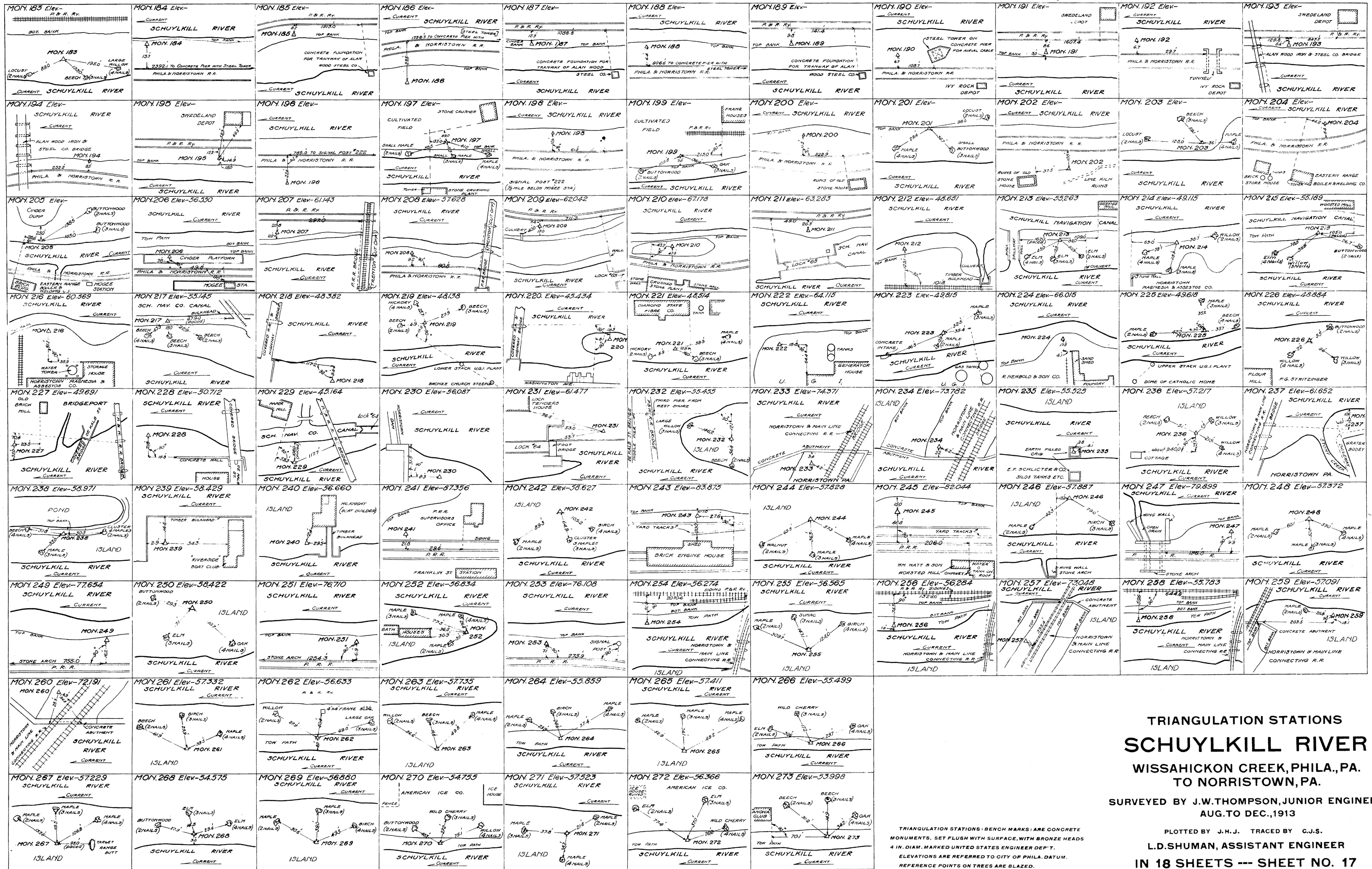
IN 18 SHEETS -- SHEET NO. 15

TRIANGULATION STATIONS (BENCH MARKS) ARE CONCRETE MONUMENTS, SET FLUSH WITH SURFACE, WITH BRONZE HEADS 4 IN. DIAM. MARKED UNITED STATES ENGINEER DEPT. ELEVATIONS ARE REFERRED TO CITY OF PHILA. DATUM. REFERENCE POINTS ON TREES ARE BLAZED.



TRIANGULATION STATIONS
SCHUYLKILL RIVER
 WISSAHICKON CREEK, PHILA., PA.
 TO NORRISTOWN, PA.
 SURVEYED BY J.W. THOMPSON, JUNIOR ENGINEER
 • AUG. TO DEC., 1913
 PLOTTED BY C.J.S. TRACED BY J.H.J.
 L.D. SHUMAN, ASSISTANT ENGINEER
IN 18 SHEETS --- SHEET NO. 16

TRIANGULATION STATIONS (BENCH MARKS) ARE CONCRETE
 MONUMENTS, SET FLUSH WITH SURFACE, WITH BRONZE HEADS
 4 IN. DIAM. MARKED UNITED STATES ENGINEER DEP'T.
 ELEVATIONS ARE REFERRED TO CITY OF PHILA. DATUM.
 REFERENCE POINTS ON TREES ARE BLAZED.



TRIANGULATION STATIONS
SCHUYLKILL RIVER
 WISSAHICKON CREEK, PHILA., PA.
 TO NORRISTOWN, PA.
 SURVEYED BY J.W. THOMPSON, JUNIOR ENGINEER
 AUG. TO DEC., 1913
 PLOTTED BY J.H.J. TRACED BY C.J.S.
 L.D. SHUMAN, ASSISTANT ENGINEER
 IN 18 SHEETS --- SHEET NO. 17

TRIANGULATION STATIONS; BENCH MARKS; ARE CONCRETE MONUMENTS, SET FLUSH WITH SURFACE, WITH BRONZE HEADS 4 IN. DIAM. MARKED UNITED STATES ENGINEER DEP'T. ELEVATIONS ARE REFERRED TO CITY OF PHILA. DATUM. REFERENCE POINTS ON TREES ARE BLAZED.

Table with columns: LOCALITY, DATE OF FRESHET, ELEV., SOURCE OF INFORMATION, DATE OBTAINED. Contains data points for various localities from 1869 to 1913.

Table with columns: LOCALITY, DATE OF FRESHET, ELEV., SOURCE OF INFORMATION, DATE OBTAINED. Contains data points for various localities from 1869 to 1913.

NOTE

A considerable amount of data was collected by the Schuylkill Navigation Co and the U.S. Weather Bureau... (that of the Weather Bureau was derived from the Schuylkill Navigation Co) at Norristown Dam, Plymouth Dam, and Flat Rock Dam...

FRESHET DATA
SCHUYLKILL RIVER
WISSAHICKON CREEK, PHILA., PA.
TO NORRISTOWN, PA.

SURVEYED BY J.W. THOMPSON, JUNIOR ENGINEER
AUG. TO DEC., 1913

PLOTTED BY J.W.T. TRACED BY J.H.J.

L.D. SHUMAN, ASSISTANT ENGINEER
IN 18 SHEETS --- SHEET NO. 18