

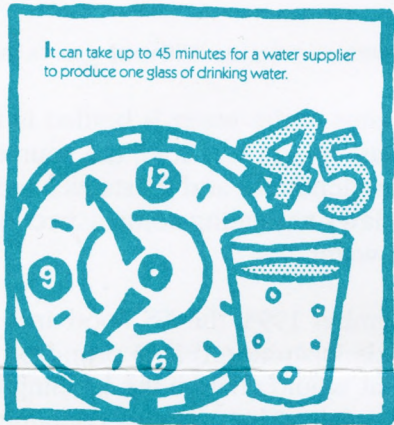


# Pipeline

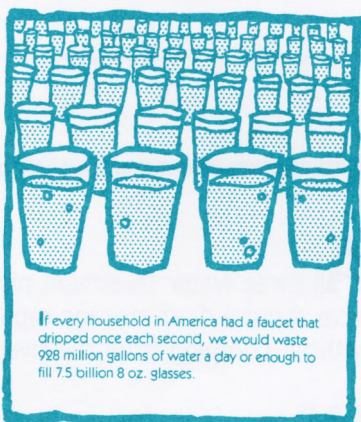
Produced by the Public Affairs staff of the Philadelphia Water Department. For more information, please contact Editor Joan Anne Przybylowicz at 685-4900.

## Blue Thumb Facts

You can refill an 8 oz. glass of water approximately 15,000 times for the same cost as a six pack of soda. And, water has no sugar or caffeine.



Eighty-five percent of the population is served by public water suppliers. The remaining 15 percent rely on 13 million private wells, cisterns, and springs for their drinking water. These sources are not regulated in all areas for safety and quality and it is up to the individual owners to test and treat their water supply.



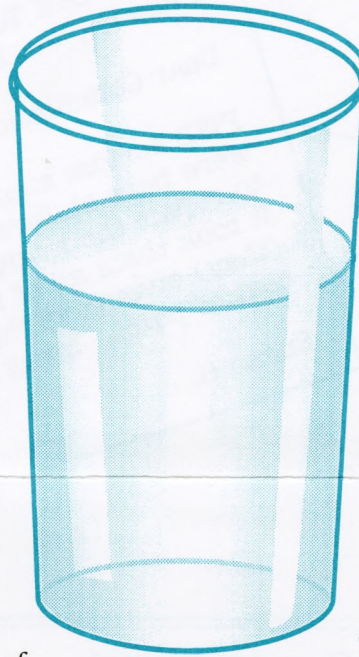
The average family turns on the tap to use water between 70 and 100 times per day.

It takes 36,000 gallons of water to produce one automobile—that's enough water for the average family of four to bathe, brush their teeth, and wash clothes for more than nine months.

Blue Thumb Facts Courtesy of American Waters Works Association

## BOTTLED OR Tap?

Customers often call us inquiring about the differences in municipal tap water and various bottled water. Bill Wankoff, chief of water treatment, notes that aggressive marketing strategies and clever advertising campaigns by bottled-water companies have given some consumers the perception that municipal drinking water supplies are not safe. While many consumers enjoy sparkling and flavored water, taste should not be the deciding factor when considering bottled instead of municipal tap water. Bill explains that Philadelphia's water quality meets or surpasses all state and federal drinking water standards and that the bottled-water industry in the US is not regulated as strictly as municipal drinking water. However, since 1985, water that is bottled in Pennsylvania must meet state standards for basic water treatment processes and for maximum contaminant levels. Also, water that is bottled out of state and sold in Pennsylvania must also meet the state's maximum contaminant levels.



meant to do. And, our Bureau of Laboratory Services samples treated drinking water at more than 85 points throughout the city on a daily basis to monitor our finished product at the customer's tap.

According to Dr. James M. Symons in his book, "Plain Talk About Drinking Water." Questions and Answers About the Water You Drink, about 10 to 15 percent of households in the US drink bottled water on a regular basis, but they pay about 1,000 times as much for bottled water than they do for municipal drinking water. Dr. Symons provides a list of the differences in various types of bottled water:

- Sparkling water is water from any source that was made bubbly by adding the gas, carbon dioxide, from an outside source.
- Seltzer is virtually the same as sparkling water, but the source is almost always tap water.
- Club soda is similar to seltzer, except that mineral salts have been added. It typically has more sodium than seltzers and sparkling waters.
- Natural sparkling water has enough natural carbon dioxide to be bubbly without any other chemicals being added.

(continued on back)

You're invited to our Open House!  
Saturday, May 13th, 11 am - 3 pm. Noon Ceremony.



Give drinking water a hand.

Show us your blue thumb!  
Celebrate  
National Drinking Water Week  
May 7 - 13

**Belmont**  
Water Treatment Plant  
4300 Ford Road

Tour the plant. See how we process water & monitor its quality for drinking. Watch our crews demonstrate how they repair water mains & sewers. Meet Captain Sewer!

Directions: City Line Ave. to Belmont Ave. Follow Belmont Ave. south to Ford Rd. Turn left. Or take SEPTA Buses 38 or 40.

George Stokes, Superintendent  
Emergency Support Services  
Philadelphia Water Department  
29th and Cambria Streets

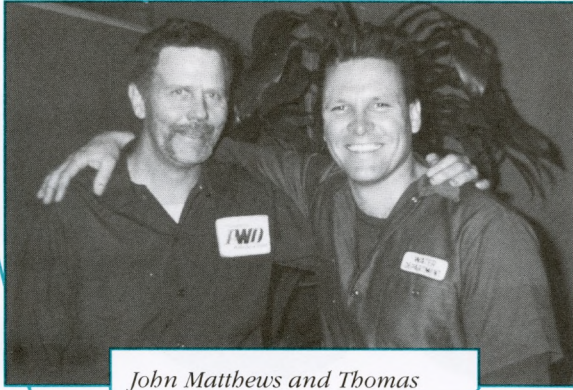
Dear Mr. Stokes:

I wanted to take time to thank you for your prompt attention to my hydrant problem on Oak Drive. Fortunately, it was a simple adjustment to correct. I also want to tell you that the crew you sent, John and Tom, were extremely courteous and handled the problem quickly and efficiently. The reason I thought you should know, is that I also have my own crew and do appreciate knowing when they have performed well. Please pass along my thanks to them again.

Thanks again for your help and cooperation.

Sincerely,

Joseph R., Jr.  
Maintenance Supervisor  
Pennypack Woods  
Home Ownership  
Association



John Matthews and Thomas Keeler, water distribution repair workers from the Hydrant Unit of Emergency Support Services, received high praises from two customers for their outstanding workmanship and for providing service with a smile.



Kumar Kishinchand, Commissioner  
Philadelphia Water Department  
ARAMARK Tower  
Philadelphia, PA 19107-2994

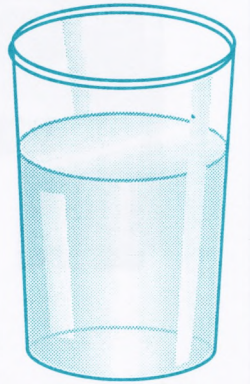
Dear Commissioner Kishinchand:

PWD service men, truck #870053, were here at Tara and Comly Roads to repair the hydrant on the corner. It took them all of 20 minutes and (they) even gave the hydrant a new coat of paint. Many, many thanks.

Susan S.

(continued from front)

- Sparkling natural water is usually spring water that has had carbon dioxide gas added.



- Spring water comes from a spring, water flowing out of the ground, with no minerals added or removed.

- Mineral water is water containing more than 500 milligrams of dissolved inorganic chemicals (minerals) such as calcium, sodium, chloride, and sulfate in each liter. (These minerals are believed by some people to be of some health benefit, although there is no scientific evidence to support such claims.)

- Natural water has no minerals added or removed.

- Purified water has all of the minerals and chemicals removed by many treatment steps.

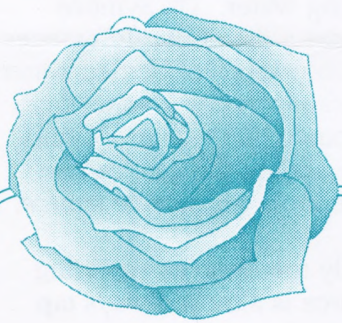
- Distilled water is made by boiling water, then catching the steam and cooling it back into water.

- Still water is water without gas bubbles.

In 15 states, if the water is bottled in the same state where it is sold, the source must be identified, and 23 states have passed laws regulating some aspect of bottled water.

In December 1993, the US Food and Drug Administration (FDA) proposed new rules that would change the labeling of bottled water. The proposal contained definitions for six types of bottled water: mineral water, artesian water, purified water, spring water, distilled water, and well water. It did not include carbonated, soda and tonic waters.

"Plain Talk About Drinking Water." *Questions and Answers About the Water You Drink*, Second Edition, by Dr. James M. Symons, published by the American Water Works Association © 1994.



MAY

**Growing pains!**

Root bound houseplants need room to grow. Transplant your houseplants into separate pots using one part EarthMate, one part peat moss, and one part of coarse sand (all measured by volume). Wait two weeks after planting before you apply fertilizer. Do not plant the crowns any deeper than they had been in the original pots. Water thoroughly and return the plants to the desired locations. Acid loving houseplants may need added sulfur to lower the pH level of the potting mix.

**Philadelphia Blue Thumb Facts**

**E**ach Philadelphian uses an average of 94 gallons of water a day.

**T**he Water Department draws water from both the Schuylkill and Delaware rivers. Water to be treated at the Baxter Plant is drawn from the Delaware River as the tide rises. Water to be treated at the Queen Lane and Belmont plants is pumped from the Schuylkill River.

**T**he temperatures of both the Schuylkill and Delaware rivers vary seasonally from approximately 33°F to 85°F.

**I**n 1994, the Water Department's three water treatment plants produced an average of 360.9 million gallons of water a day. The Baxter Plant produced an average of 199.5 million gallons a day, or 55.3% of the City's total output. That's enough water to fill almost one-third of the Spectrum.



**T**he Queen Lane Plant produced an average of 91.4 million gallons a day or 25.3% of the City's total output. At that rate, it would take the water treated at Queen Lane six and one-half days to fill the Spectrum.

**T**he Belmont Plant produced an average of 70 million gallons a day or 19.4% of the total output. At that rate, it would take ten days to fill the Spectrum.

**A**ll three water treatment plants have about a day's storage capacity without pumping from the rivers.

**W**ater from the Schuylkill River has a higher mineral content and is slightly harder than water from the Delaware. Overall, Philadelphia's water is considered "medium" hard. Hardness defines the quantity of minerals, such as calcium and magnesium, in a gallon of water. These minerals react with soap to form an insoluble substance or precipitate, and can affect common household chores such as cooking and washing. Hardness also affects other water qualities such as its corrosiveness. Soft water is more corrosive than hard water.