

# WATER DEPARTMENT NEWS

PHILADELPHIA, PA.

JANUARY-FEBRUARY, 1964



CARMEN GUARINO

## CARMEN GUARINO BECOMES CHIEF OF SEWAGE SYSTEM

Carmen Guarino has been appointed chief of sewerage operations.

Mr. Guarino, who recently passed written and oral civil service tests for the position, is not new to the Water Department. He has been with us for 13 years.

Serving for several years as assistant chief of sewage treatment, he was named acting chief of sewerage operations last July, following the resignation of Deputy Commissioner Edward D. Bastian.

Mr. Guarino was born and raised in Philadelphia, is 38 years old, married, and the father of a girl, Cathy, who will be seven in November. The Guarinos live in Lawndale.

A graduate of LaSalle College with a B.S. in chemistry and biology, Mr. Guarino also took various courses related to his type of work at Drexel,

(Continued on Page 10)

## CITY LAUNCHES FLOATING LABORATORY TO COLLECT FACTS ON RIVER CHANGES

### MAD WORLD SPECIAL

If you think "It's a Mad Mad Mad Mad World," you can see one version of it on the evenings of February 9 and 11.

The Employees' Recreation Association has arranged special tickets for its members at special reduced prices. These are tickets to the film, which is playing at the Boyd Theater.

The association promises other mad mad mad mad bargains for its members in the coming year. You can still join the association for one dollar dues, and that's not so very mad.

The new Water Department navy has proudly unfurled its ensign to the breeze.

Now shooting the waves of the Delaware River is the "Aquadelphia," the department's shining new cabin cruiser, engaged in one of the most important (though hardly secret) missions of our time: the study of the river from Reedy Island to Trenton.

Latin and Greek scholars will appreciate the symbolism of "Aquadelphia," meaning "water brotherhood" and implying the common interest which communities up and down the river have in good water. It is also a symbol of the intellectual, rather than recreational, nature of the new navy.

The new cruiser, traveling at speeds up to 32 miles per hour, will be able to cover more of the river in a day than the old row boats could cover in a month. Thirty feet long and 10½ feet wide, it will be a floating laboratory crammed with laboratory counters and equipment. Its steel hull and sound weather proofing will permit its use in all kinds of weather.

### Need for Cruiser

The need for a specially equipped cabin cruiser has been growing in recent years as the Water Department and the U. S. Geological Survey have expanded their river studies. Although automatic monitoring stations were set up at six points along the stream, the need for a boat which could cover the entire estuary in a day—picking up as many samples as required, reaching various river points at favorable times, and permitting analyses on board—became pressing.

Not only is the new boat fast enough, but it is also suitably

(Continued on Page 2)



"Why don't you move to Philadelphia, Gibson? I hear they've done wonders with their water."

# WATER DEPARTMENT NEWS

Published by  
THE WATER DEPARTMENT

Commissioner, Samuel S. Baxter

Editor ..... Raymond J. Harris  
Editorial Assistant ..... Mary Schmidt

Feature Writer ..... Rosemary Rosenthal  
Photography ..... Fred Twers and Staff:  
John McWhorter,  
A. T. Mallis, Charles Bender,  
Edward Ebba, Thomas Keating, John Richmond

Art ..... Henry Cheatham

DIVISION	REPORTER
Administrative .....	Rosemary Rosenthal
Construction .....	Pearl Cohen
Customer Service .....	Betty Butts
Design (Distribution) .....	Stanley Carroll
(Electrical) .....	Louis B. Sklar
(Hydraulic) .....	John Mirkil
(Main Sewers) .....	Mario G. Celoni
(Mechanical) .....	Rocco Giannini
(Specifications) .....	Joseph Mair
(Structural) .....	Morris Siegel
Distribution .....	Richard Supplee
Garage (Logan Street) .....	Lloyd Harrison
Mechanical Engineering .....	John Floyd
Meter Shop .....	Harry Yablin
Northeast Works .....	Michael Matteo
	Joseph Cooper
Personnel .....	Gwenolyn Carter
Plant Maintenance .....	Irwin Baskin
Pumping—Schuylkill Division .....	Roderick Thomas
Delaware Division .....	Beatrice Blum
Southeast Works .....	Ernest Craig
Southwest Works .....	Henry Hoochuk
Water Operations Office .....	Sylvia Weiss
Water Treatment .....	Dave McDermott
Belmont Plant .....	Richard Pinder
Roxborough Plant .....	Carl Righter
Torresdale Plant .....	Rose Sideman

## FLOATING LABORATORY

(Continued from Page 1)

equipped. Besides much special sampling and testing equipment, the boat carries a continuous sampling device—a hose and pump for collecting surface samples through the bottom of its own hull as it moves across river. An electronic depth finder gives quick readings of river depths.

Operated by a two-man crew approved by the U. S. Coast Guard, the boat will carry four or five chemists and sanitary engineers when making studies. Two bunks will permit 24-hour research.

The \$16,759 craft is equipped with twin engines of 280 H.P. each, twin screw propellers, twin rudders, two 80-gal. gasoline tanks, two 30-gal. water tanks, a refrigerator for preservation of samples, an enclosed bridge, and sliding windows. The cabin headroom is 6 feet, four inches.

The "Aquadelphia" will be attached to the Water Department's Research and Development Unit, which has logged many hours in mid-stream in recent years.

To All  
Our Readers  
A Prosperous  
New Year

Hostess: "I have a lonesome bachelor I'd like you girls to meet."  
Athletic Girl: "What can he do?"  
Chorus Girl: "How rich is he?"  
Society Girl: "Who are his parents?"  
Secretary: "Where is he?"

## HOME SHOW ON WAY

Look for Water Department displays at the Philadelphia Home Show again this year. The show will be held at the Trade and Convention Center the week of February 17 to 23.



LET'S LOWER  
THE SCORE IN '64

PRINTED IN U.S.A.  
© NATIONAL SAFETY COUNCIL

Civilization is a system under which a man pays a quarter to park his car so he won't be fined a dollar while spending a dime for a nickel cup of coffee.



A SMART BOAT for a brainy crew is the "Aquadelphia." Manned by engineers and chemists, the Water Department's new cabin cruiser will greatly aid studies of the Delaware River.

## GERALD ARNOLD ACCEPTS POST FROM PHILIPPINE GOVERNMENT

However hard the wintry winds may blow in Philadelphia, one former Water Department employee won't feel them.

Gerald E. Arnold, who is now basking in the sunshine of Manila, recently resigned as deputy commissioner to accept a position with the Philippine National Water Works and Sewage Authority.

Under a contract with the Philippine Government, Mr. Arnold will serve as special consultant and chief deputy to the authority manager, with responsibility for training staff and advising the manager on water and sewage works operation. The authority was set up by the Philippine Congress to oversee water and sewerage systems in the islands' main cities.

Mr. Arnold has a two-year contract, with a third year option.

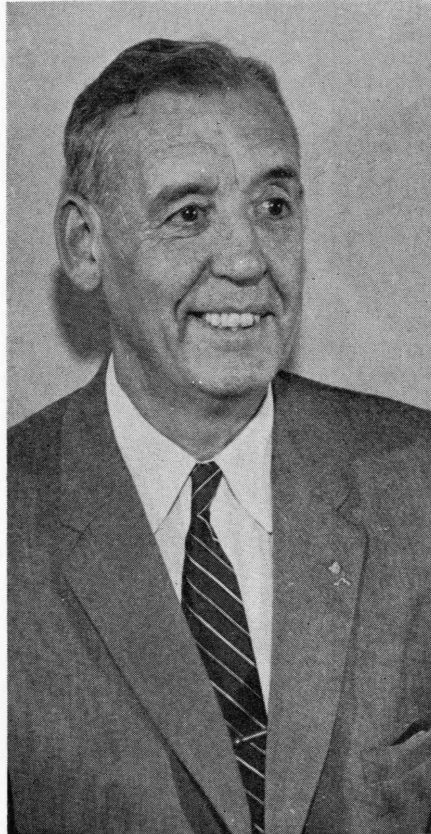
A well known figure to department employees, Mr. Arnold has headed water operations for the past 11 years in Philadelphia. Within the past few months, he has also supervised the department's construction activity.

### Improved Water System

"We shall miss Jerry Arnold," said Commissioner Samuel S. Baxter, "and many of our water customers will miss him. He has done an outstanding job in providing good water for our city. To him belongs no small part of the credit for transforming our old water system into a modern, efficient system."

Mr. Arnold came to Philadelphia from San Diego, Cal., where he served as director of the water department for seven years. A civil engineering graduate of Colorado State University, he has held various positions in this country and abroad.

He worked for the Denver water system, spent two years in Honduras with the United Fruit Company, was construction superintendent for a Colorado contracting firm, and served as chief engineer with the Western Oil Drilling Company, a California firm. From 1930 to 1941 he was chief of water purification for the San Francisco Water Department. During World War II, he served as a major and lieutenant colonel in the U. S. Public Health Service. Mr. Arnold and his wife, Elizabeth, have two children and four grandchildren.



GERALD E. ARNOLD

## PAST AND FUTURE APPEAR IN COLORFUL 1962 REPORT

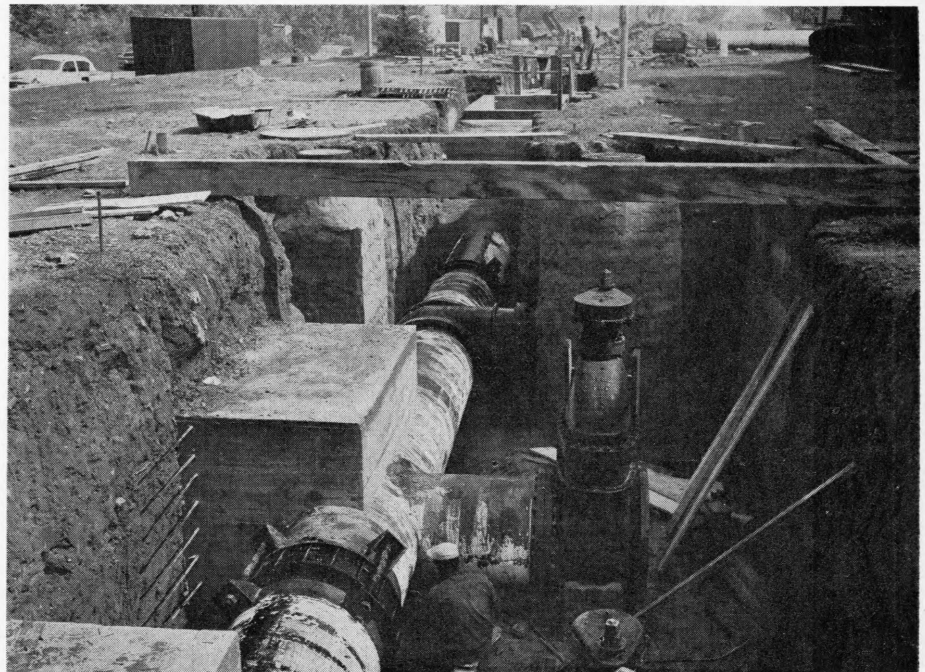
Recently off the presses is the Water Department's Annual Report for 1962.

The two-color, 52-page report, contains more than 60 photographs of 1962 events and is written in easy to read English. It covers practically every phase of departmental planning and achievement.

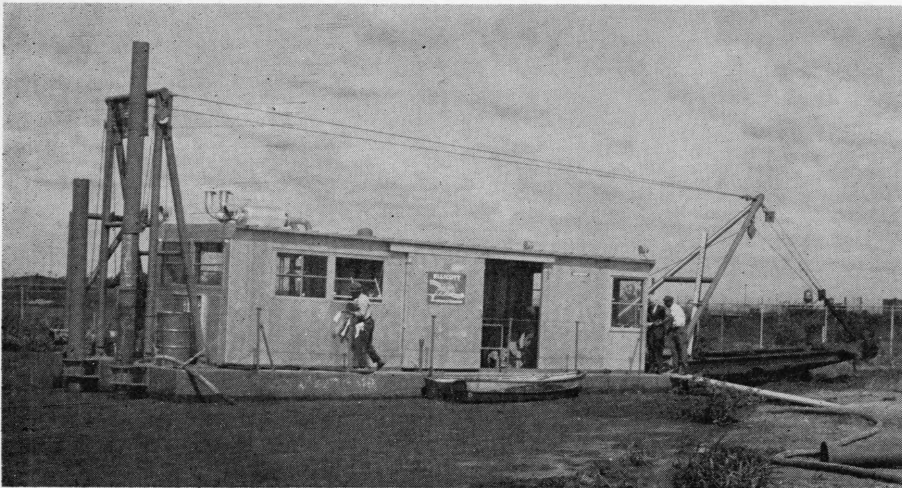
A handsome report—in the fine departmental tradition of recent years—the report is being widely circulated among utilities across the country, as well as among local civic, business, and engineering groups. Past Water Department reports have vied with the best reports put out by other water utilities, and have drawn many favorable comments from other cities. The 1962 report is in the same high class.

A special feature is a "Conclusion" written by Commissioner Samuel S. Baxter. In this the commissioner outlines some of the future problems which the department will face.

Copies of the report may be obtained by writing to the Commissioner's Office, Room 1103, City Hall Annex, or telephoning MU 6-3803.



TORRESDALE FILTERED WATER Pumping Station gets new valve and pipe connections to a big feeder main that comes down from the Torresdale Treatment Plant. Job is part of station modernization.



## NEW DREDGE PUMPS OUT LAGOONS - CITY GETS "MORE FOR ITS MONEY"

One of the City's busiest machines is the new floating dredge at the Northeast Sewage Treatment Works. Since November the dredge has pumped two million gallons of sewage sludge from overflowing lagoons to a barge that transports the sludge to sea.

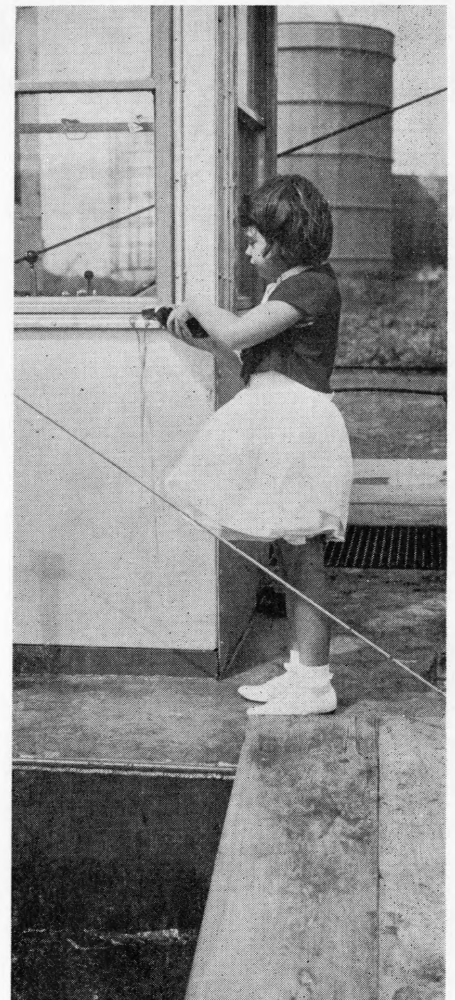
Although the Northeast Works has barged its sludge to the Atlantic Ocean for nearly two years, the sludge — until recently — was taken only from digester tanks, never from lagoons. The digester tank sludge is 95% water, that from the lagoons only 90%.

By clearing the lagoons of their present loads, the plant will be able to use them for future evaporation

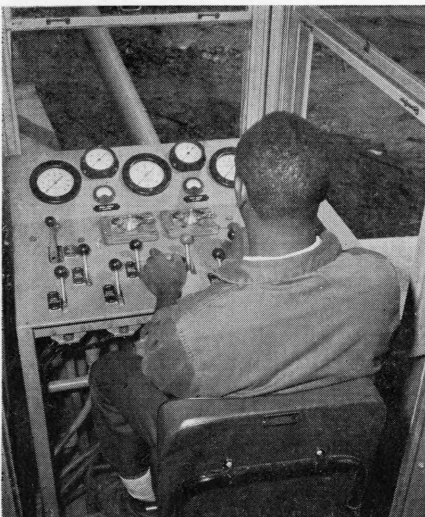
of some water from all its sludge before this is sent to sea. Thus twice the amount of solids will be carried to sea for the same money.

The floating dredge, with roomy deck house, long manipulable dredging ladder, and multi-bladed revolving cutter, breaks up the sludge in the lagoons through a cutting action, and then pumps it through a 3,200 ft. pipeline.

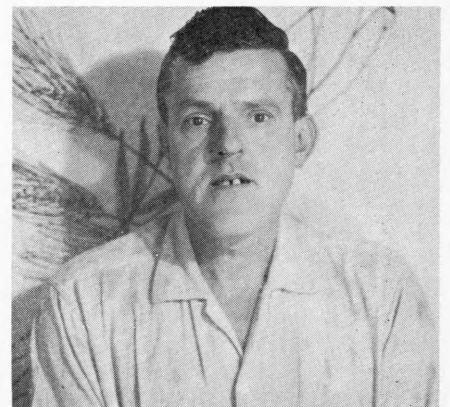
Capable of pumping a minimum of 1,750 gallons of sludge (with 10% solid content) per minute, the dredge can pump up to 4,000 gallons per minute when the material to be pumped is suitable. Its cutterhead can dig to a depth of 20 feet below the surface of the water.



**CATHY GUARINO** christens the department's new hydraulic dredge (above left) with bottle of soda pop. Cathy is seven-year old daughter of Carmen Guarino, chief of sewerage operations.



**DREDGE OPERATOR** manipulates long dredging "ladder" and revolving cutter from control booth. Pump at right can pump up to 4,000 gallons of sewage sludge per minute.



**JOHN S. LAVORINI**

Promoted to  
Maintenance Mechanic I

See Next Page

# NAME WALTER YOKA NEW SUPERVISOR AS 38 EMPLOYEES OBTAIN PROMOTION

That Water Department employees are on their toes is evidenced by 38 civil service promotions in recent months.

Among those promoted is Walter Yoka, who has been named a supervisor in Sewer Maintenance. Mr. Yoka was appointed a foreman I in 1954 and upped a grade three years later.

One of the department's expert sewer "doctors," Mr. Yoka helps to keep 2,400 miles of sewers in good shape . . . investigating sewer breaks, checking repair jobs, looking for water seepage, and overseeing the work of his subordinates. Before joining the department, he was a sergeant-major in the U. S. Army.

Also promoted is a 19-year man, Herman Korhan, who entered the City service as an engineering draftsman in 1944. For several years Mr. Korhan worked as a civil, and then hydraulic, engineer I in the Design Branch, and then was transferred to the newly formed Water and Sewer Systems Planning Unit in 1961. There Mr. Korhan has helped to solve some of the tricky problems of old sewer reconstruction. He has been promoted to hydraulic engineer II.

### Other Promotions

*Northeast Works:* John S. Lavorini, from pumping station mechanic helper to maintenance mechanic I;



**ROBERT CHANIN**  
Public Works Inspector I

George B. Honnen, Jr., from electrician to electrical foreman I; Richard S. Wiggins, from sewage treatment operator I to labor foreman I; and Calvin C. Johnson, from laborer to plant helper I.

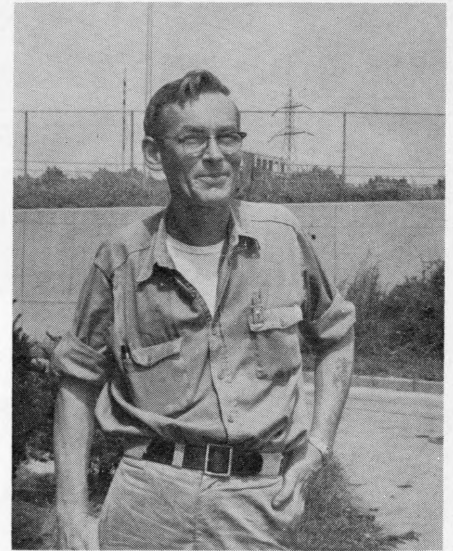
*Construction:* Richard Thompson, William H. Collins, John E. Flager, Jr., and Robert Chanin, from engineering aide II to public works inspector I; James D. Holden, from engineering aide III to public works inspector II; and Daniel J. McCusker, from load control dispatcher to mechanical engineer II.

*Distribution:* Raymond W. Zeliniski, Vincent Washington, and Charles M. Russo, from repairman to emergency repairman; James D. Pickett and Joseph Rozier, from repairman trainee to repairman; Louis Barnes, Jr., Jacob Lowman, Jr., William Cook, James R. Rawls, and Javester Little, from laborer to repairman helper; and Kathleen T. McCann, from clerk stenographer I to II.

*Sewer Maintenance:* Carl A. Leping, from foreman I to II, and James D. Fuller, from laborer to foreman I.

*Design:* Leonard W. Tapper, from electrical engineer I to II, and James A. Phillips, from engineering aide II to III.

*Engineering Office:* John J. Coscia and Robert Weszinger, from graduate engineer to civil engineer I.



**GEORGE B. HONNEN, JR.**  
Electrical Foreman I



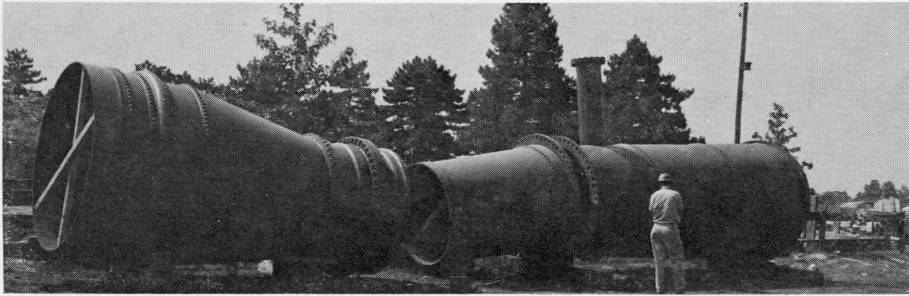
**RICHARD S. WIGGINS**  
Labor Foreman I

*General Administration:* Sam Halter, from administrative intern to administrative analyst II, and Abraham B. Weiner, from management trainee to personnel technician I.

*Others:* Harold O. Rumsey, from clerk typist I to II, Southwest Works; Ronald J. Coleman, from field inspector I to field representative, Customer Service; Julius E. Mudry, from engineering aide III to civil engineering I, Water and Sewer Systems Planning Unit; Victor Michnowicz, from engineering aide I to II, Water Main Records; Alexander Dukes, from laborer to semi-skilled laborer, Building Maintenance; Horace Bradley, from trades helper to automotive mechanic, Logan Garage; and James A. Hunter, from laborer to mechanic helper, Water Operations.



**LEONARD W. TAPPER**  
Electrical Engineer II



## FIFTY MILLION GALLONS OF WATER TO POUR INTO UNDERGROUND "CAVES" AT TORRESDALE

Any wine cellar restaurateur would heave a big sigh if he could see them. Up on State Road are 21 huge underground caverns, which could hold enough wine vats to keep a restaurant going for years.

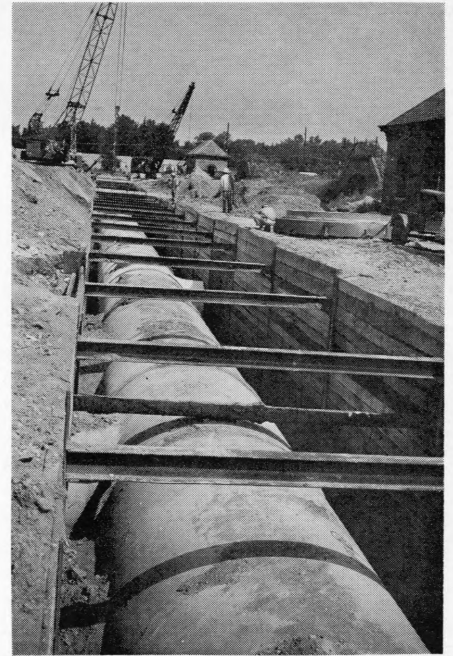
But, alas, there will be no "dining under," by candle light. The Water Department plans to fill these man-made caves with water.

The yawning grottoes once formed part of the slow-sand filters of the Torresdale Water Plant, but when a new plant opened in 1959 the underground filter beds went out of business. Now the beds are being turned into storage basins for filtered water from the new plant. At first 21 beds . . . a little later 44 other beds.

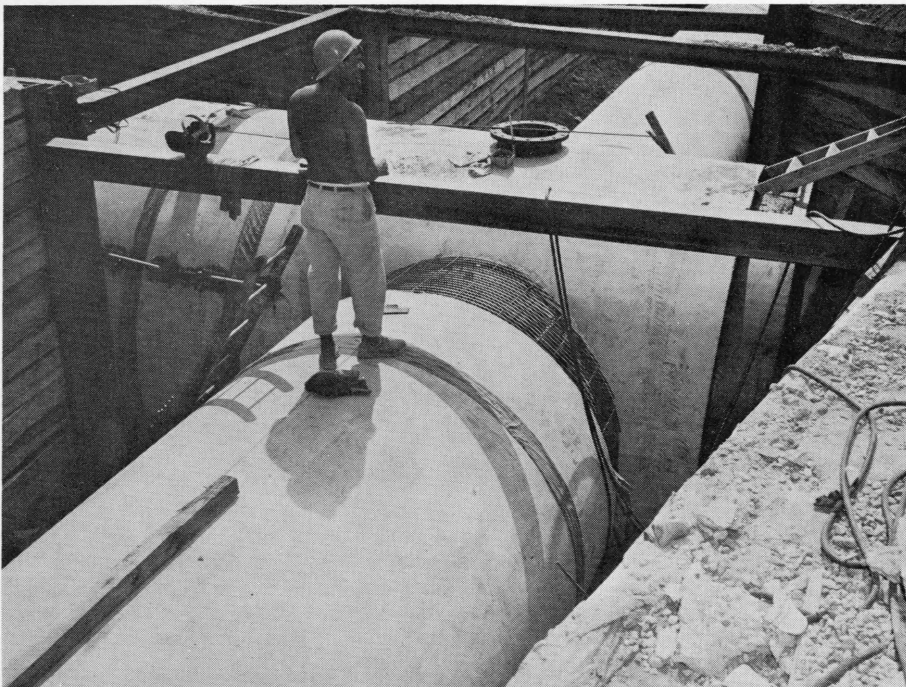
With 90,000 cubic yards of sand

and gravel gone, the first 21 slow-sand beds are nearing Deluge Day. Fifty million gallons of water will be poured into them through mammoth concrete conduits that glare with bright whiteness from the bottom of deep trenches.

Before the deluge descends, the caverns are worth a quick visit. Their arched columns, vaulted ceilings, cement walls and floors give them the look of a sunken city. Connected by newly cut 4' x 4' "doorways," they form a series of underground labyrinths, softly illuminated by half-moon openings to the outside courts. In many of them blue-brick baffle walls, reaching part way to the ceiling, stand ready to ease the surge of the water when it enters.



**BIG CONCRETE** branch main (above) will carry water to new underground storage basins at Torresdale. Water flow to basins will be measured by large Venturi tubes (above left).



**ADEQUATE WATER FLOW** to the new basins will be assured by this 11-ft. diameter conduit (center), with first of several planned 7-ft. lines branching from it.

Coming from the outside courts—dust covered because of construction—the visitor clammers down a ladder into the cool vastness of the grottoes. With 13-ft. high ceilings, the grottoes extend individually 133 x 253 feet, and the visitor can walk in clean comfort from one to another. On a hot day the cool wine cellar temperature is refreshing; on a cold day there is warm protection from the river winds that sweep across the open courts.

The underground quiet is occasionally punctured by the hiss of a "spray gun" shooting a mixture of sand and cement into a crack.

### Ingenious Drainage

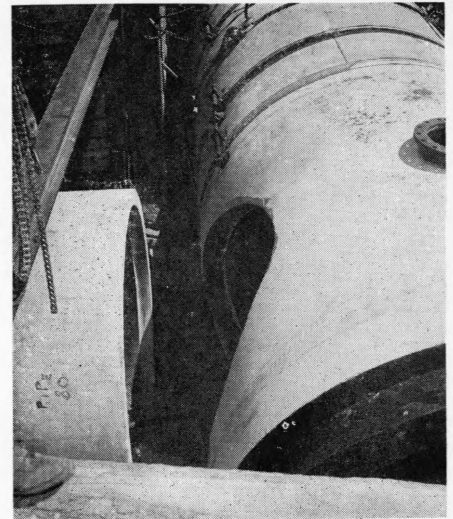
For the visitor with a scientific bent there is something of interest in these caverns. The contractor has installed a "Rube Goldberg" system for collecting and draining off overhead rain water. This system is ingenious: The rain, soaking through the layers of earth above the cement ceilings, collects in hollows above the pillars; there it filters through tiny beds of sand and gravel, which strain out impurities; then it passes into hoses connected to long thin pipes that stretch the length of the pillars inside the grottoes; from these small pipes it passes into bigger, six-inch pipes,

(Continued on Page 7)

## TORRESDALE RESERVOIR TAKES SHAPE



**WORKMAN SEALS** a crack in an underground grotto pillar by shooting a mixture of sand and cement into it under high pressure.



**PHOTOS:** Above, huge concrete supply mains ready for joining. Below, example of extensive sheathing and shoring with wooden beams for deep trench work; also view of an old filter bed cleared of its sand and newly equipped with drainage pipes.

## UNDERGROUND BASIN

(Continued from Page 6)

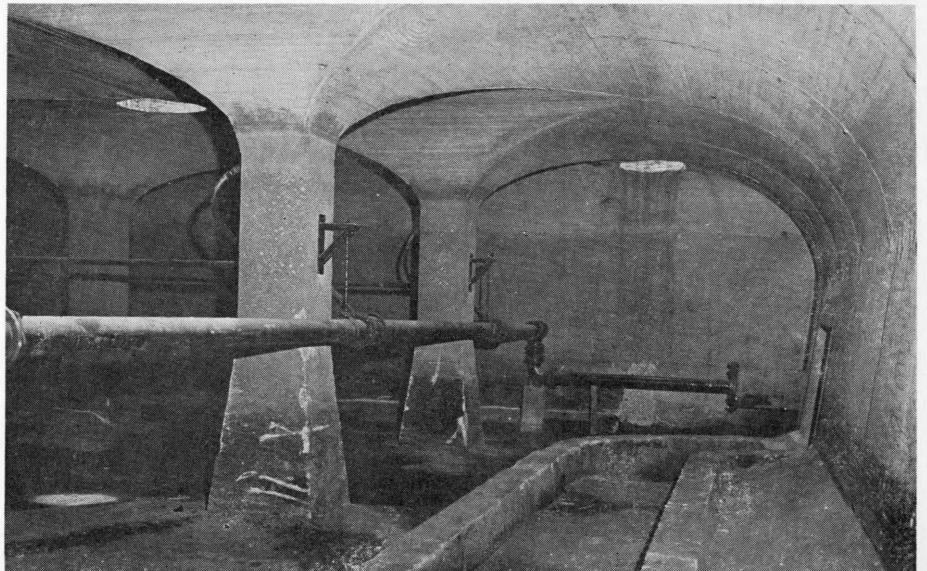
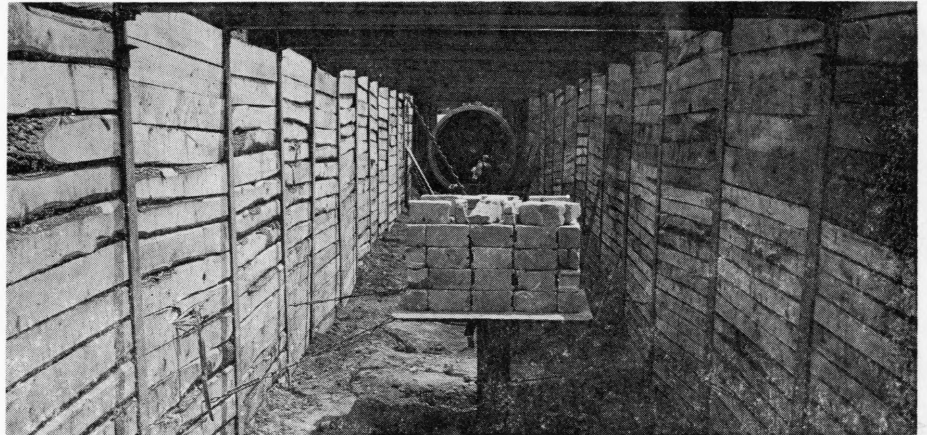
and is carried off through big underground conduits. The purpose of this system is to keep rain water from contaminating the treated water which will be stored in the grottoes.

Preparation of the 21 grottoes is only part of the \$1,890,000 job now nearing completion. Scarcely less impressive are the huge concrete pipe lines, ranging from five feet to 11 feet in diameter and laid at depths of 14 to 23 feet.

An 11-ft. conduit, which extends from the Torresdale post treatment building to the edge of the courts, was built several years ago in anticipation of the basin construction. This conduit now shoots 7-ft. diameter branch lines down the first court, and 5-ft. lines radiate from these to the new basins.

Still to come is a system of sophisticated electronic controls for the new storage basins. At the Torresdale filter building an operator will be able to regulate flow from the basins by setting a dial. He will also be able to control remote valves and a residual pump, and will receive data continually on the basin water level and rate of flow.

There will be no candle light glamour, but there will be plenty of pushbutton progress.



## WATER DEPARTMENT EMPLOYEES GIVE \$26,231 TO UNITED FUND FOR MANY COMMUNITY NEEDS

Generosity flowed in the Water Department again this year as 1,416 employees gave \$26,631 to the United Fund for a variety of community health, welfare, and other services. The 1,416 employees represented 92% of the department's enrollment, and they gave an average of \$18.80 each.

Although the Water Department was unable to reach its \$29,849 United Fund goal, its contribution represented 90% of this—a percentage considerably higher than that achieved by many other large City departments.

As in past years, middle and upper management personnel helped to raise the Water Department's total contribution through "Fair Share" giving. This giving was in line with the gifts of similar personnel in private industry. Employees at every level, however, had a share in the final result.

More than 250 private agencies are represented by the United Fund. These agencies care for the orphaned, the aged, the mentally retarded, the sick, and the many other groups in need of help or guidance.

### A TIP ON PARKING BRAKES

A recent industry change affecting all passenger cars and trucks is being called to the attention of all drivers. This change concerns the parking brake, often called the "emergency" brake.

The new design of the brake assembly represents a definite improvement, if one understands how to use it for maximum effectiveness. You need to remember one thing when parking a vehicle and using this parking brake. Change your driving habit so that each time you put your parking brake on, you completely depress your foot brake at the same time. When this is done, the brake shoes will be completely engaged and the vehicle will not be allowed forward or backward movement.

### CAN YOU TOP THIS?

One Water Department employee—Samuel Lewis—heads an "All City Family."

A partially disabled policeman, he has worked as a clerk in the Construction Branch for some time. He counts three sons in City service—one a policeman, another a park guard, and still another a fireman. In addition, he has two sons-in-law who are policemen.

Just about the time you are ready to make ends meet—somebody moves the ends.

## Strictly Personal

### Delaware Pumping

Two of our co-workers at Torresdale Raw Water Station have retired. William Jackson on August 18 after 18 years of City Service and Paul Bream September 14 after 20 years. Both were pump operators. We wish them the best of luck.

We extend big welcomes to Dewey Ether-ton, mechanic helper, James Hunter, mechanic helper, and Louis Solomon, clerk I. They are transfers to Delaware Division Pumps.

A speedy recovery to Charles Silvestri, who underwent an operation; a quick return of health also to Steven Lorenti.

### Accounting

Wedding Bells: Bill Carey, a co-op student, on November 9; Miss Brenda Stephens now Mrs. James Warren; and Wesley O'Neill last June to Frances Clark. They all seem mighty happy about it.

The stork recently delivered a girl to Mrs. Loretta Harris.

### Customer Service

Welcome to two new Customer Service men, Stanley McLean, who left the Department of Collections, and Joseph McCafferty, who stepped over from the Meter Shop.

Wedding bells tolled September 28 for Carolyn Stewart, who married Gerald Flint at Holy Souls Church. Customer Service voted Carolyn "most beautiful bride of the year."

Our best wishes go with William Snyder, who retired after 20 years with the City.

Here's hoping that John Monaghan recovers quickly after his recent operation.

### Southeast Works

Congratulations to Mr. and Mrs. Henry Jackson who celebrated their 25th wedding anniversary September 28.

Also to Donald McCoy, who walked down the aisle with Constance Robinson October 19.

Charlie Flanagan is reported to be doing a "swell job" as recreation leader at Southeast.

### Construction

After a summer of illness, Mrs. Birdie Ziegler came back to work September 30 minus her cane. We were happy to see her.

Within recent months, Construction has added two division engineers and four assistant division engineers to its payroll. E. Ferrero and R. Boggs became division engineers, and E. Dunnigan, H. Ireland, C. Pennoni and D. Anderson were named assistant division engineers.

### Administration

Joan Greene, secretary to Safety Officer John Cappio, was married October 12 to Isaac Albright. Joan was given a party by her co-workers, plus a large comforter.

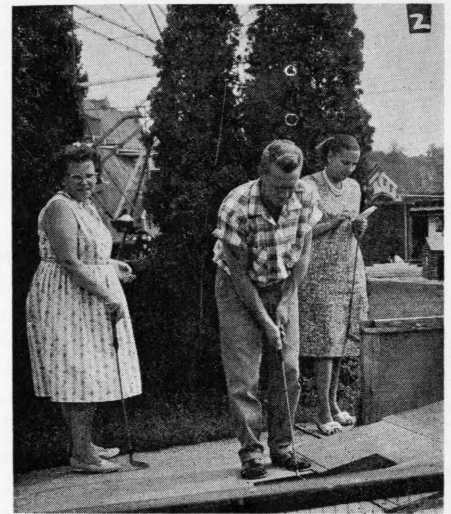
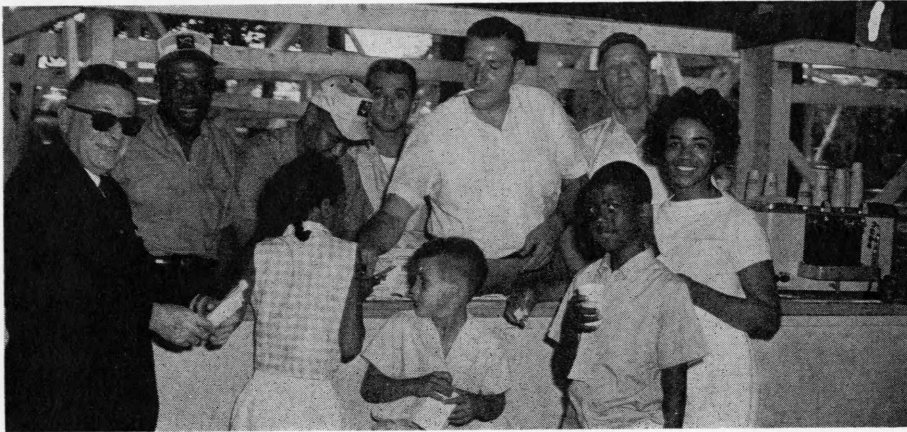
Eugene Mudry, civil engineer in WSSPU, has been the picture of pride since August 23 when his wife gave birth to their first child, Stephen, who weighed in at 7 lbs. 6 ozs.

We regret to note the death of Mario Lalli, a young engineer in the water and sewer systems planning unit, together with his bride, Emily, in a jet plane crash at Elkton, Md., on December 8. The youthful couple were married on November 23 and were just returning to Philadelphia from a honeymoon in the Virgin Islands.

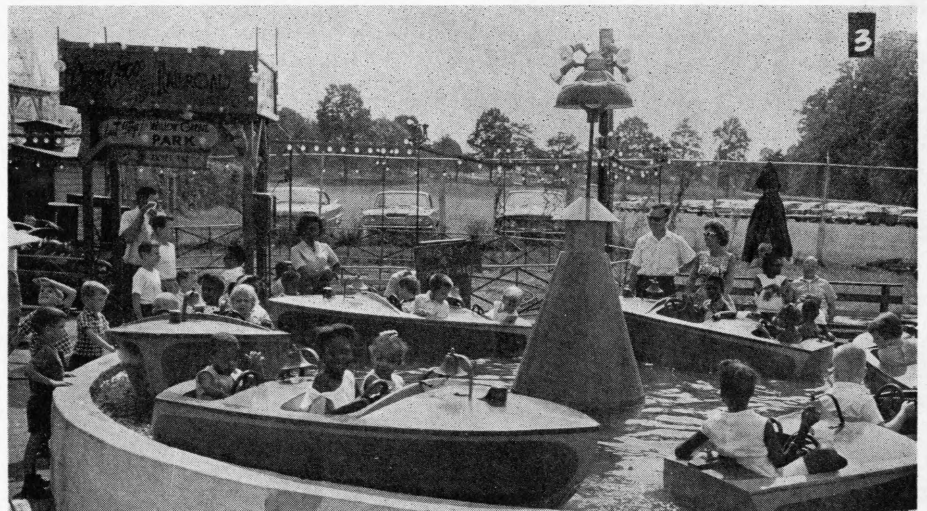


THOSE \$25 U. S. SAVINGS BONDS will come in handy for William Barbier (left) and Philip Barrale (right) as they start retirement. Supt. Thomas Beudet presents bonds on behalf of co-workers in building and plant maintenance. Standing l. to r., Messrs. Vicario, Golderer, Smith, Baskin, Olexa, Stenson, Ricciardi, Burns, Solomon, and Capara.

# SOME MEMORIES OF LAST SUMMER



**BIGGEST EVENT** of last summer was the Water Department picnic at Willow Grove Park. One thousand employees and family members turned out for a day of sunshine and fun. Photos: (1) Refreshment stand does a brisk business, while (2) golfer William Snyder gets ready to sink one, and (3) children enjoy one among many free rides.



**AFTER GRAND TOURNAMENT** of City Employees' Tennis League, Commissioner Samuel S. Baxter presents a trophy to Henry Lipmanson, of Finance Director's Office, who won the men's senior singles.



Photo: Courtesy of Evening Bulletin

**IRATE WATER CUSTOMERS** picket a closed fire plug on a hot summer day. Water Department crews were forced to close hundreds of illegally opened fire hydrants last summer to preserve water pressures. Some customers, alas, were quite vocal about the shut-off.

## From The Editor's Box

### BAXTER RECEIVES AWARD

For organizing and heading a new Boy Scout district, Commissioner Samuel S. Baxter received a Distinguished Service Award December 7. The award was presented to the Commissioner at the annual dinner of the Philadelphia Boy Scout Council's Schuylkill district, and is the district's top award.

Under Mr. Baxter's leadership, the district, which is located in North Central Philadelphia west of Broad Street, has grown to 50 Scouting units and 1,000 Boy Scouts in just four years.

### RECREATION GALA DRAWS 200

Two hundred members and relatives attended the Fall banquet of the Employees' Recreation Association November 30 at the Latin Casino, Cherry Hill, N. J.

### WALTER RINGER A PIONEER IN WATER QUALITY STUDIES

Quality Control and Research, mourns the death of its supervisor Walter C. Ringer, Jr., who passed away last August 3.

Walt, as he was popularly known to the department, worked in the old filtration section at Belmont Filters, pioneered with the laboratory section, and took part in special research projects in the programs of the water works improvement studies.

His contributions at Belmont were many and much of this work was the precedent of the latter-day Quality Control and Research Section. With the formation of this section, he was appointed Sanitary Engineer III, and served as its supervisor until his death.

Walt was a registered professional engineer and was active in several professional organizations, principally the A. W. W. A. and the Pa. W. W. O. A., who in recognition of his service, interest and work in the water works field and his contributions to the various committees, honored him with the I. M. Glace award in 1959.

Many are the friends and associates who mourn the passing of Walter C. Ringer, Jr.

Richard Pinder

There was a floor show, plus music by Ray Charles and his orchestra. It is reported that some guests danced on the tables.

### FROZEN NORTH CALLS HIM

One Water Department employee has taken off for a cooler climate. Richard Bunker, maintenance mechanic II in the Delaware Pumping Division, resigned November 1 to work for R.C.A. at Thule, Greenland. Mr. Bunker also became a father for the third time on October 17.

### NAME GAVIT PRESIDENT

Joseph Gavitt, a pumping station operator in the Delaware Pumping Division, has been elected president of Water Department Local 394, Federation of State, County and Municipal Employees, AFL-CIO.

### CARMEN GUARINO

(Continued from Page 1)

Pennsylvania State College, Temple U., and Manhattan College, N. Y. He is a sanitary engineer and a registered professional engineer in Pennsylvania.

Mr. Guarino is a member of ASCE, Water Pollution Control Federation, on a six-man board covering all of Pennsylvania for certification of men wanting to become sewage treatment plant supervisors, and also on about 10 engineering committees. As though this weren't enough, he also gives talks at meetings and conventions and these are later published in engineering papers and journals; such as his article in the May, 1963 issue of the Journal of the Water Pollution Control Federation.

Mr. Guarino's hobby is trying to keep his family happy. He and his wife, Annette, love to travel and used to go to Florida each winter, but can't do that any more now that their daughter attends school. He feels this is a very challenging job—very interesting with lots of possibilities and opportunities to learn. We wish Mr. Guarino lots of good luck in his new position and are certainly appreciative of his happy smile and cheery "Good morning" every day.

Rosemary Rosenthal

## THIRTY NEW WORKERS COME INTO DEPARTMENT

Thirty new employees have entered the Water Department in the past few months. They are:

*Sewer Maintenance:* Samuel Q. McQueen, sewer crawler; John Murray, laborer; and Vincent Mannello, brick mason.

*Meter Shop:* Harry E. Moore and Lee Natson, equipment dispatcher I; Eleanor Jones, clerk typist I; and Theodore Butler, Jr., field inspector I.

*Construction:* John H. Thompson, public works inspector I; Duncan B. Hubley, graduate engineer; Paul R. Wesselt and Arthur S. Waxman, engineering aide II.

*Design:* Ivan Siryj, civil engineer I; Thomas Hickey, III, and Murray J. Cowan, graduate engineer.

*Northeast Sewage Works:* Alan F. Hess, graduate engineer; Albert Collins, Jr., sewage treatment operator I; Ronald Haisfield and Martin Lozanoff chemists I.

*Distribution:* Stephen T. Adamof, repairman; Kenneth Mobley, Paul D. Clemens, and Roy Lewis, repairman helpers.

*General Administration:* Cecile I. Tickner and Jethro Savior, clerks I; and Wilhelmenia Kelly, clerk typist II.

*Others:* Willis M. Smith, trades helper in Building Maintenance; Ruth Thompson, clerk typist I in Customer Service; Theodore Stevenson, sewage treatment operator I at Southeast Sewage Works; James R. Wallace, engineering aide I in Sewerage Administration; and Cornelius M. DeGeus, electronic technician I in Load Control.



"I won't be in today, boss. I feel below par."