

2004.059.0105



WATER DEPARTMENT NEWS

PHILADELPHIA, PA.

FEBRUARY-MARCH, 1962



RELAXED CHESS CHAMPS demonstrate moves which won the top trophy in the Philadelphia Chess Association's Industrial League. (L. to r.) Al Trasoff, George Holmes, Richard Kraft (alternate), Fred Van Nynatten, Gustave Van Nynatten, and John Mirkil. The champions are Water Department engineers.

WATER MEN TO HOLD NATIONAL MEET HERE

Three thousand water works engineers will converge on Philadelphia in June for the 82nd Annual Conference of the American Water Works Association. With them will come 1,000 wives.

The gathering, which comes as the climax to a decade of Philadelphia water system rebirth, will feature many topics of country wide interest, ranging from the salvation of the nation's water supplies to conversion of salt water, and from advanced methods of stream study to the new Delaware River Compact.

An impressive array of water experts will conduct the sessions, and several speakers of national standing will appear.

Host for the conference, which will be held at Convention Hall from June 17 to 22, will be the Pennsylvania section of AWWA, but the Philadelphia Water Department is playing a leading role. Water Commissioner Samuel S. Baxter is chairman of the local arrangements committee.

Committee Members

Other members of the committee are: Victor A. Appleyard, executive director of the Chester Municipal Water Works Authority; Deputy Commissioner Gerald E. Arnold, of the Philadelphia Water Department; J. J. Barr, president of the American Water Works Service Company, Philadelphia; George H. Dann, executive vice president of the Philadelphia Suburban Water Company; L. S. Morgan, chief engineer for the Bucks County Health Department and secretary of the Pennsylvania section of AWWA; Joseph O'Grady, vice president of the Rockwell Manufacturing Company; and C. V. Roberts, president of the Roberts Filter Manufac-

(Continued on Page 5)

WATER DEPARTMENT WINS SEVEN MATCHES TO TAKE PHILADELPHIA CHESS CHAMPIONSHIP

In seven victorious matches, with never a defeat, Water Department players have captured the championship of the Philadelphia Chess Association's Industrial League.

Battling against some of the ablest chess players in the area, the department's team downed the Philadelphia Electric Company January 16, knocked a really tough opponent (Eastern State Correctional Institution) from the boards February 10, and overthrew Chester Pike February 19.

Other rivals defeated were Westinghouse Corporation. Alco Oil and Chemical Corporation, Comegys Food Corporation and Blue Cross.

Not only did the Water Department win its matches, but four of the five top individual player standings in the league were won by its team members. Al Trasoff emerged in first place with six wins and one draw; George Holmes and Fred Van Nynatten picked up the third and fourth spots with six victories and one loss; while John Mirkil, team captain, had five wins, one loss and a draw. Second place was captured by Howard Brockway, of Comegys Food Corporation, with six victories and no losses. The champions will receive the John F. Harbeson Chess Award at the Philadelphia Chess Association's annual banquet May 18.

WATER DEPARTMENT NEWS
Published Bi-Monthly By
THE WATER DEPARTMENT

Commissioner, Samuel S. Baxter

Editor.....Raymond J. Harris
Editorial Assistant.....Mary Schmidt
Writers in This Issue...Elwood Unruh, Joseph Cooper,
Richard Pinder, John Mirkil, Paul Siegel.

Feature Writer.....Rosemary Rosenthal
Correspondent, Emp. Rec. Assn.....Irwin Baskin
Photography.....Fred Twers and Staff:
John McWhorter,
A. T. Mallis, Charles Bender,
Edward Ebba

Art.....Henry Cheatham
DIVISION REPORTER
Administrative.....Rosemary Rosenthal
Construction.....Madeline Chiaravaloti
Customer Service.....Betty Butts
Design (Distribution).....Stanley Carroll
(Electrical).....Louis B. Sklar
(Hydraulic).....John Mirkil
(Main Sewers).....Mario G. Celoni
(Mechanical).....Rocco Giannini
(Specifications).....Joseph Mair
(Structural).....Morris Siegel
Distribution.....Richard Supplee
Garage (Logan Street).....Lloyd Harrison
Mechanical Engineering.....Harry Myers
Meter Shop.....Harry Yablin
Northeast Works.....Michael Matteo
Joseph Cooper
Personnel.....Dorothy Kutys
Plant Maintenance.....Irwin Baskin
Pumping—Schuylkill Division.....Roderick Thomas
Delaware Division.....Bonnie Dixon
Southeast Works.....Ernest Craig
Southwest Works.....Henry Hoochuk
Water Operations Office.....Sylvia Weiss
Water Treatment.....Dave McDermott
Belmont Plant.....Richard Pinder
Roxborough Plant.....Carl Righter
Torresdale Plant.....Rose Sideman

**Tools don't
cause
accidents—**



**TORRESDALE PLANT PUSHES
VISITOR TOTALS UP TO 35,000**

Close to 500 visitors a month passed through the Torresdale Water Treatment Plant in 1961. Thus the 1960 average was maintained, bringing total visitors to 35,000 since the plant opened September 29, 1958.

About 75% of visitors in 1961 were public school groups from Philadelphia, Bucks and Montgomery Counties.

Noteworthy visitors included the South Jersey Water Superintendents' Association, the American Association of Safety Engineers (Philadelphia chapter), the Philadelphia Foremen's Club, and leading officials from 10 foreign countries.

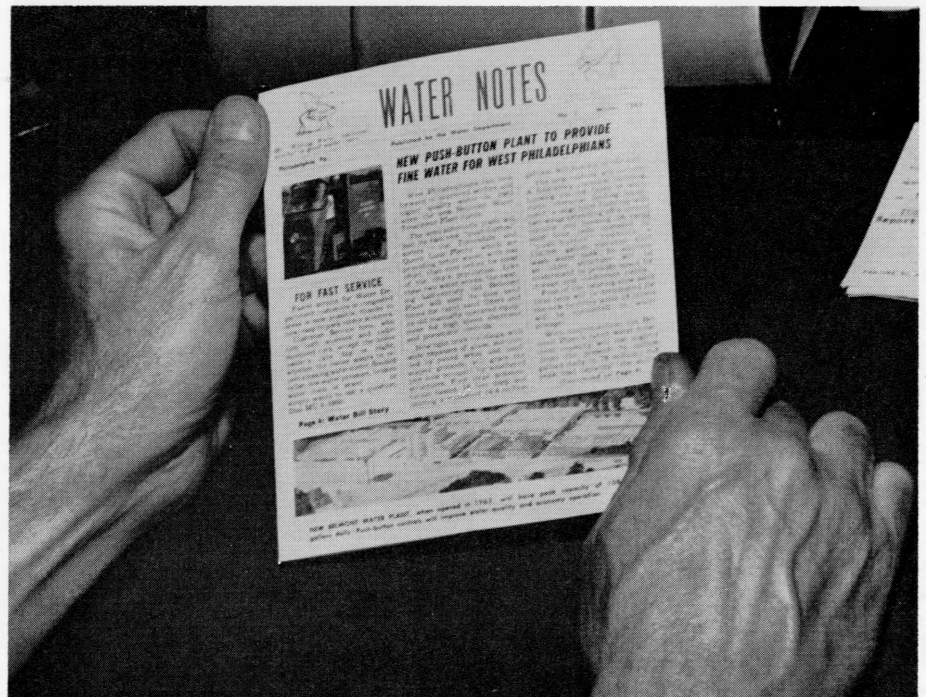
**CITY EMPLOYEES THROUGH
INTO TRAINING INSTITUTE**

Classes are crowded this month in the Philadelphia Government Training Institute. More than 200 City employees have enrolled for the six and eight week courses, which began February 26.

One of the surprises is the strong appeal of the data processing course, which covers number and code systems, computers, data programming and other electronic era subjects. Thirty-seven employees signed up for the course, which is taught by Miss Judith Moss, chief of programming for the Office of the Finance Director.

No surprise are the 37 valiant souls who are tackling the advanced supervision course of B. Barney Palmer, Water Department administrative services director. Barney has some "lulu" problems for his students to unravel.

There are still many potential budget makers in the City, as the 59 enrollees in Deputy Finance Director Harry McDowell's ever popular budget course testify. B. Russell Franklin, chief of training for the Department of Public Health, has 52 in his basic supervisory workshop.



**MINIATURE NEWSPAPER TELLS 520,000 CUSTOMERS
STORY OF CITY'S WATER AND SEWERAGE PROGRESS**

Facts about Philadelphia's water progress are reaching two million water customers in the form of a miniature newspaper entitled, "Water Notes."

The tiny four-page stuffer is being mailed out with current water and sewer bills to 520,000 homes and businesses.

Published by the Water Department, the first issue carries thumb-nail sketches of the new Belmont Water Treatment Plant now being built in West Philadelphia, the improvements in the quality of the city's

water during the past 10 years, the growing introduction of "push-button" controls into the water system, the nearly complete diversion of the city's sewage to the sewage plants, and the new water and sewer rates. The stuffer also tells how water customers can get fast service in a pinch. Photographs illustrate the items.

The stuffer is intended to inform customers about some of the improved plants and services which their water and sewer dollars are purchasing for them.

EDWARD MILBURN STEPS UP TO RECREATION GROUP PRESIDENCY

Edward C. Milburn has been elected president of the Water Department Employees' Recreation Association for the coming year.

Mechanical stores clerk at the Northeast Sewage Treatment Works, Ed has been active in the Recreation Association since its founding . . . as vice president, member of the board of directors, softball manager, etc.

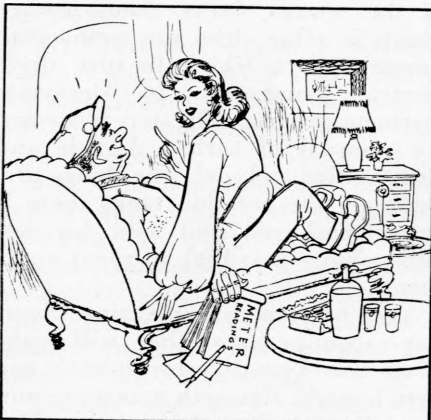
He entered the Water Department in September 1955 after a stint with various private firms, such as Penn Elastic, Kaiser Metal, and Sarfert Hosiery.

Other newly elected officers are: Vice president, Richard Pinder, a sanitary engineer in the Quality Control and Research Section; secretary, Erwin Baskin, an engineering aide at the pumping station office (29th and Cambria Streets); and treasurer, Melvin Banks, accountant in the Accounting Section. The two are serving second terms.

New Vice President Richard Pinder entered the old Water Bureau in 1948 as an assistant chemist, and later became a full chemist. Dick has played a vital part in surveys of river pollution and in helping private firms to abate pollution nuisances. His sympathetic handling of Water Department customers has won him many laudatory letters and telephone calls.

The new officers were chosen by the association board of directors, as required by the organization constitution.

The association's current membership drive is continuing. Dues are one dollar a year, entitling the member to all benefits.



"Wouldn't you rather go bowling with the fellows in the Employees' Recreation Association?"

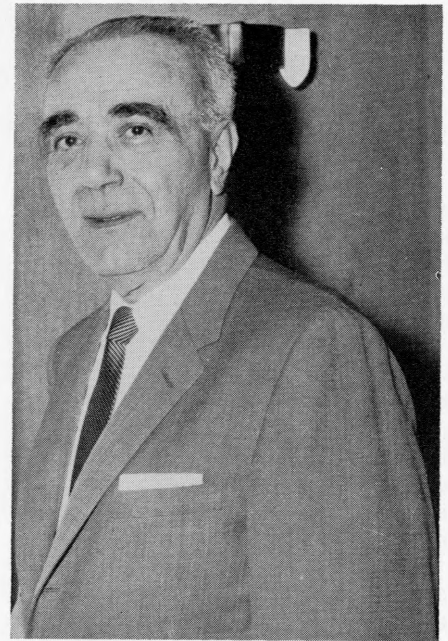
CORNELIUS O'KANE TO AID CITY PERSONNEL DIRECTOR

Cornelius J. O'Kane, acting personnel officer, has been named assistant to City Personnel Director Foster B. Roser.

Mr. O'Kane, who entered the Water Department two years ago as training officer, has received a civil service promotion to personnel technician III. A graduate of St. Joseph's College, where he received a B.S. in psychology, he worked initially in the Personnel and Police Departments.

DIPLOMACY HELPS

Samuel Schwartz, assistant to Commissioner Baxter, is on his toes when it comes to public relations. Recently a customer walked in and said, "Do you remember my ugly face?" Unperturbed, Sam replied, "I remember your countenance."



MICHAEL LARIO, formerly of the Water Department's Design Branch, has been named duplicating supervisor of the Records Department's central duplicating unit. Mike, who was chosen from a civil service list, has been acting supervisor for the past year. He has a staff of four.



NEWLY ELECTED OFFICERS of the Employees' Recreation Association—President Edward C. Milburn (right), and Vice President Richard Pinder—hold a tape recorder offered as the prize in a raffle recently conducted among association members to raise funds for recreational activities. William Schoettler, of the Northeast Sewage Works, held the lucky stub, drawn from a mass of 2,510 tickets.

THE AMAZING BACTERIA

By Joseph E. Cooper, Chemist

Northeast Sewage Treatment Works

Few things in nature are so unusual as bacteria, and if there is one place in this world where they are welcome it is a sewage treatment works. Bacteria are the unseen workers who keep a sewage plant going.

The alcohol, beer, cheese, and wine industries also owe their allegiance to bacteria, which perform some of their most vital processes. In fact, without bacteria, the human being would cease to exist, because part of our digestion is carried on by these microbes.

Yet how little is known by the average person about bacteria and their amazing lives. The statistics alone are bewildering.

If one bacterium is placed in a flask of the proper nutrients, and there are no adverse conditions, how many bacteria would there be in 10 hours, provided the bacteria split on schedule every 20 minutes? Answer: 1,073,741,824. What a family tree for one tiny fellow.

If this little guy's descendants are each one twenty-five thousandths (1/25000) of an inch long and they are set in a straight line end to end, how far would they reach? An impressive 3,523 feet, or seven-tenths of a mile.

If each bacterium weighs 2.2 billionths of a pound, his billion or so

relatives will tip the scales together at 2.4 lbs.

How much space would this huge family take up? Only seventeen ten-thousandths (0.0017) of a cubic inch. They would scarcely cover the face of a dime.

Bacteria Devour Sewage

Bacteria are indeed amazing, and it is some of their amazing characteristics that make them so valuable for a sewage plant. While the chemist in a water treatment plant tries to eliminate bacteria through filtration and chlorination, the sewage works chemist welcomes all bacteria and sees that they have a good home.

Bacteria have large appetites, and it is their appetite which helps to turn raw sewage into a harmless sludge. Multiplying them by the billions in a good environment is essential to the sewage treatment process.

One of the prime cares of the sewage works chemist therefore is to make sure that his small charges are well fed, and that they have a regular "physical" check-up. At the Northeast Works a number of interesting and useful facts can be determined about bacteria by using the Warburg Respirometer. With this machine it can be determined whether the bacteria are well fed or



starved, active or lazy, sick or well.

How much food a bacterium eats, how much oxygen it breathes, and the amount of carbon dioxide it respire, form a fascinating study, and these characteristics are the basis of the trickling filter and the activated sludge sewage treatment processes.

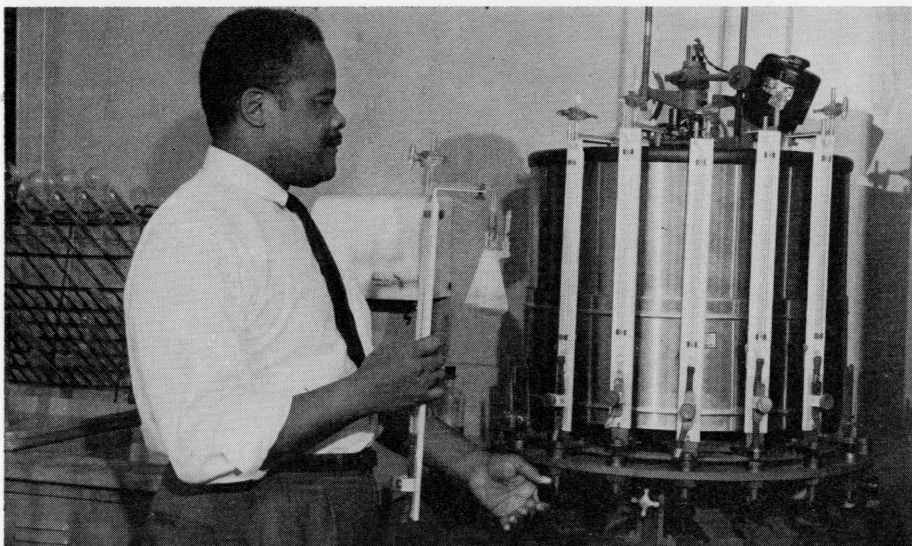
In general terms, there are two classes of bacteria: The "aerobes," which take oxygen from the fluid in which they swim, and the "anaerobes," which take oxygen from the food that they ingest. Some bacteria can obtain oxygen either way. Some bacteria thrive on the various sugars or carbohydrates, others on fats. Particularly amazing are those which thrive on sulfur and produce sulfuric acid as a waste product.

Germ's Earn Their Keep

At the Northeast Works the large, open aeration tanks offer food and oxygen for the aerobes (indeed air is pumped into these tanks constantly), while the closed digestion tanks provide a bountiful supply of food and carbon dioxide for the anaerobes. In these various tanks the bacteria are constantly at work, devouring and breaking down the sewage.

All living things give off waste products, and the bacteria at Northeast are earning their keep in this respect too. The "anaerobes" in our digestion tanks produce methane gas, which is used to heat the buildings of the sewage works. Some sewage plants in other cities use methane to power motors, which in turn drive electric generators. In Germany, methane gas from digesters is treated for removal of carbon dioxide and then bottled and sold. The sludge produced in the aeration tanks there is dried, packaged and sold for fertilizer, since it is high in plant nutrients.

Yes, bacteria are amazing. Some day—soon perhaps—they will make space travel possible for animals and man himself. Research grants are now financing studies for reconvertng animal wastes to edible foods through the medium of the microbe—the amazing bacterium.



AUTHOR JOSEPH COOPER checks up on health of sewage bacteria with a Warburg Respirometer. He can tell whether bacteria are well fed or starved, active or lazy, sick or well. The machine shows uptake rates, velocity constants, biochemical oxygen demand, etc. of activated sludge.



IT'S A PROUD MOMENT for wives of two able employees as 100 colleagues do honor. Francis L. Craig (2nd from left), retired in merited glory as the Evening Bulletin carried an unprecedented editorial about him, reprinted above. Frank J. Keough (standing at right), came back from retirement to receive tributes to long service. Commissioner Samuel S. Baxter (center), offers good wishes.

MONEY SAVING FRANCIS CRAIG SAYS FAREWELL AS CHIEF OF MECHANICAL ENGINEERING SECTION

One of the City's leading money savers—Francis L. Craig—has retired after 39 years of municipal service. Mr. Craig, who headed the Water Department's mechanical engineering section, was named the City's first "Employee of the Year" last June partly because of the hundreds of thousands of dollars which he saved the City.

Mr. Craig and Frank J. Keough, who retired last October as head of the Logan Garage, were honored recently at a luncheon by more than 100 colleagues.

Noted for a phenomenal memory and a quick grasp of engineering problems, Mr. Craig has been highly regarded throughout the department. Whenever some recondite bit of information was needed to answer a difficult question, the solution was always, "Ask Frank Craig."

Amiable and hard working, Mr. Craig kept Philadelphia's water and sewerage facilities going in the face of shortages of personnel and equipment during World War II. As a re-



FRANCIS L. CRAIG (left), is welcomed to ranks of retired by George Levering, former city employee.

sult of improvements which he fostered, the department has saved \$500,000 yearly on pumping of water, and \$500 a day on water treatment. Other savings were effected through

AWWA CONFERENCE

(Continued from Page 1)

turing Company in Darby.

Alternates are G. Garland for Mr. Barr, James Myers and Kenneth Shull for Mr. Dann, and Jesse Roberts for C. V. Roberts.

Mrs. Samuel S. Baxter will be in charge of women's activities.

The varied conference program will include a number of "nights": Get-together, June 17; honors and awards, June 18; a musical show, June 19; a banquet, June 21. Trips will be organized to local historical sites and to the Fairmount Park mansions.

Displays by water utilities and equipment manufacturers will be set up in the exhibition halls at the Convention and Trade Center. These will include several Water Department exhibits.

his contribution to the development of the Load Control System.

To Frank Craig, starting his retirement at a youthful 62, we offer good wishes.

TINY WATER SYSTEM FIGHTS MID-CITY FIRES

Millions of Gallons At Touch of Button

Few Philadelphians know that their city has *two* water systems: One the giant regular system, the other a tiny high pressure system for protecting valuable real estate in central and north central city from fire.

The other day I stood in one of the two lone pumping stations belonging to the *tiny* system. It was at Race Street, only a skip and a hop from the Delaware River.

Suddenly a bell clangs . . . the engineer races for the huge, light dotted panelboard . . . he stands by, a finger on a panel button . . . "It's the Fairhill Station, up at 7th and Lehigh, answering an alarm," says Pumping Chief Harry Lopata. "Watch the pressure gauge overhead."

I look up at the big, clock-like gauge as its dial speeds from 50 lbs. to 175 lbs. per square inch. "Fairhill is filling the mains," says Lopata, "all 60 miles of them."

We wait breathlessly, but nothing happens. Again the alarm . . . it was only a standby . . . maybe an automobile burning. The dial overhead slowly sinks to 50 lbs. normal pressure as the water level in the system is lowered.

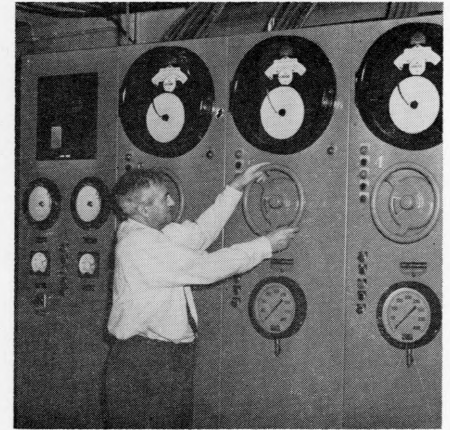
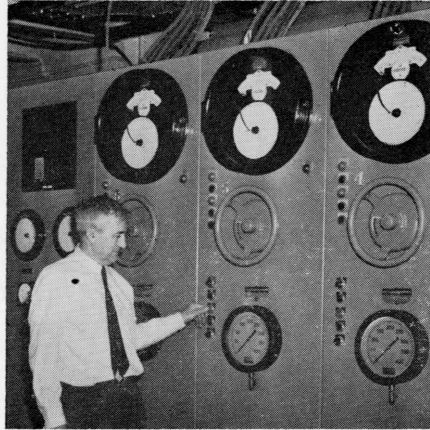
"What if it had been the real thing?" I inquire.

Lopata motions to Engineer Carl Zender, who pushes a button . . . a pump whirs, building up a head of water . . . the pressure climbs again as Zender rhythmically taps buttons . . . alternately opening and closing a valve . . . in a few minutes the pressure dial is up to 220 lbs. and a wall of water is moving through the mains.

"That's where we would keep the dial," says Lopata, "even if it meant starting all six pumps. The more fire hydrants there are in use, the more we have to fight to maintain the pressure. Big fires need a lot of water pressure."

Below, the water was rising from the river through two three-foot diameter mains, drawn up into the vacuum created by the pumps. "It's harder here than up at Fairhill," observes Lopata. "There we have a five million gallon raised reservoir. Gravity flow helps with the pressure, and less pressure is needed in the Fairhill district."

Suppose there had been a sizable fire? "The two stations can work



HIGH PRESSURE PUMP ROLLS as Chief Harry Lopata presses button (left), and sets pump speed (right), at Race Street Station.

separately in their own districts or support each other," notes Lopata, "but in either case the run might be a long one." Station personnel might face a grueling 40 hours, as happened with an eight alarmer in January; then eight million gallons flowed through the mains before the fire was brought under control . . . and even more hours were needed to wet down the smoldering embers.

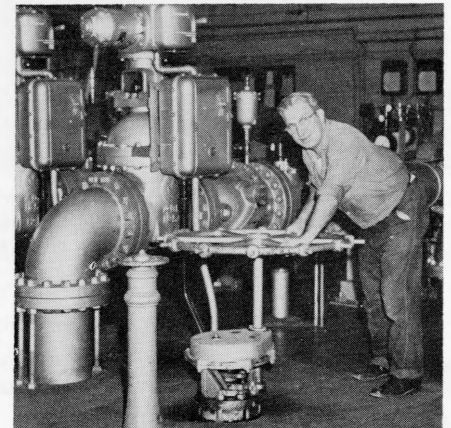
"It can be a long fight," says Lopata. Modestly he doesn't even mention the Press Building fire (Dec. 28, 1956) when station pumps ran for a week.

20 High Pressure Men

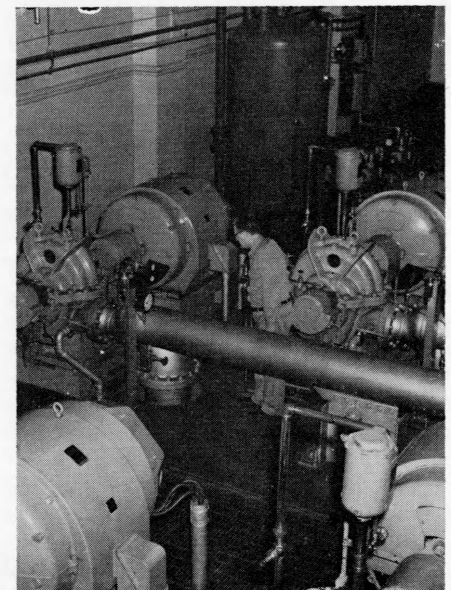
This tiny system, so vital to the mid-city, is manned by 20 persons, whose daily business is "pressure." In 1961 Race Street personnel alone responded to fires, alerts and false alarms an average of six hours a week. In addition there were test runs and the endless job of keeping equipment in top shape. Ingenuity is important. Lopata, for example, thought up an improvement to prevent pump bearings at Race Street from overheating, and his men are making the change.

Split into four shifts, the eight engineers and eight operators—plus miscellaneous personnel—live in a world almost separate from the 14 pumping stations, 3,000 miles of mains, 67,000 valves, and 25,000 fire hydrants that make up the regular system. In their world are only two stations, 63.3 miles of mains, less than 1,900 valves, and scarcely more than 1,000 special hydrants. The stations are linked to the city's fire alarm network by bell,

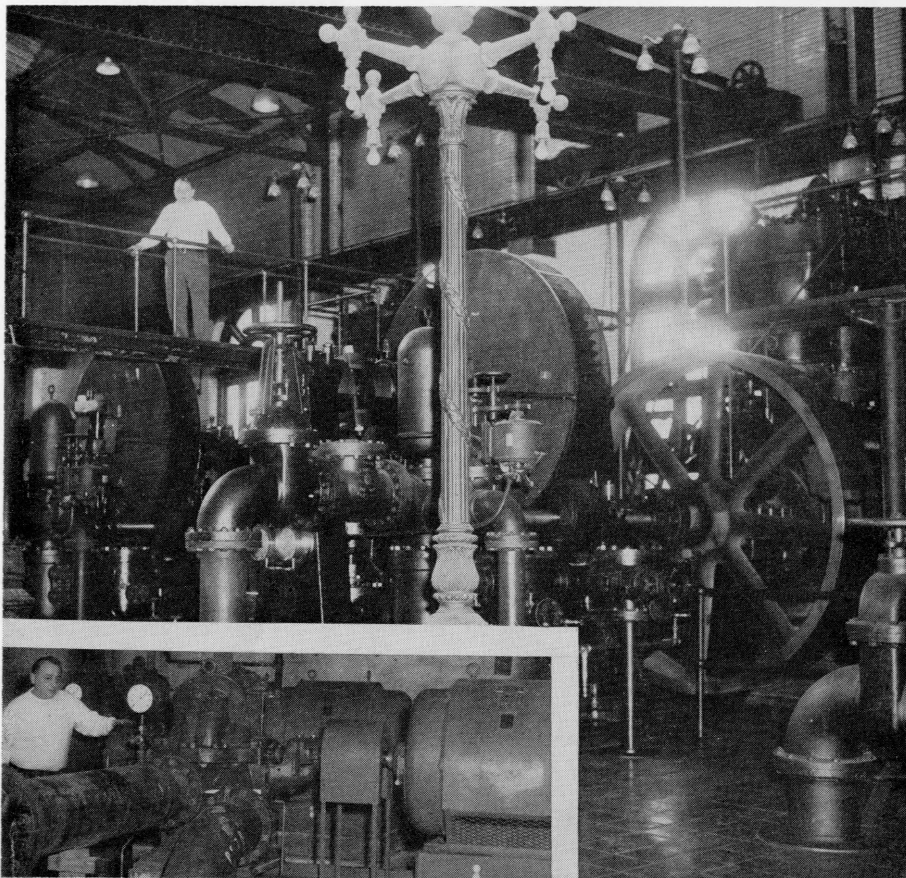
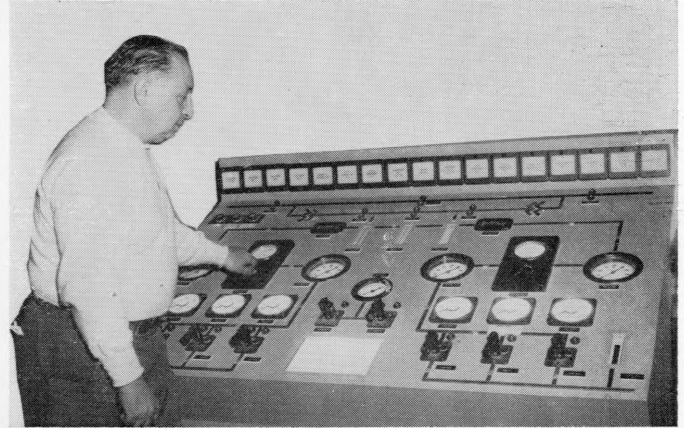
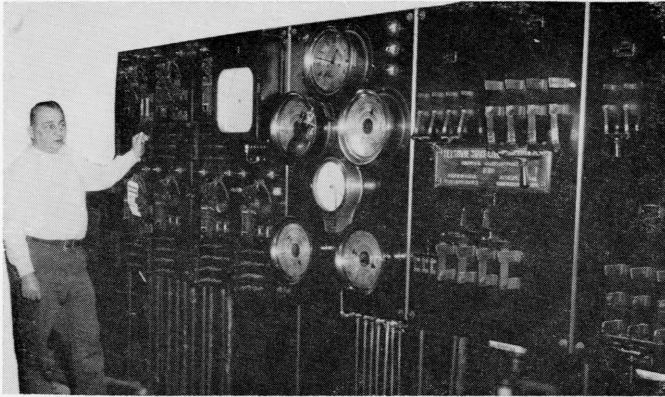
(Continued on Page 7)



ENGINEER CARL ZENDER opens discharge valve (above), while Engineer Timothy Hamilton inspects pumps (below), during trial run at Race Street.



MODERNIZATION MAKES TINY SYSTEM MIGHTY



THE OLD IS GIVING WAY to many changes as a result of a \$465,000 modernization now under way at the Fairhill High Pressure Pumping Station. At top left, Engineer William Schiavo looks over abandoned panel-board and compares it at top right with a new console panel. The latter controls new electric pumps (inset, left), which have replaced huge, gas driven pumps surveyed by Schiavo from mid-air walkway. Gas pumps will be removed. Fairhill's sister station at Race Street was modernized several years ago.

TINY WATER SYSTEM

(Continued from Page 6)

public address, and (at Fairhill) ticker tape.

Until a few years ago the "high pressure" men wrestled with one-story high gas pumps of half-century vintage, that were noted for ear splitting backfiring. Today the re-equipped Race Street Station has small compact, electrically driven pumps, manageable switchgear, and a panelboard dotted with buttons, colored lights, automatic chart recorders, and controls for setting 11 different pump speeds.

A similar change is now taking place at the Fairhill Station where three new electric pumps are in service, three more are planned, and the old gas pumps are being removed.

The tiny high pressure system is also becoming mighty.

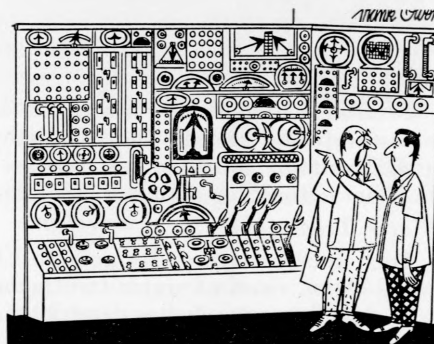
The Editor.

FLU SHOTS ANYONE?

*A bunch of germs were whooping it up
In the bronchial saloon.
Two bugs on the end of the larynx
Were jazzing a ragtime tune.
While back of the teeth in a solo game
Sat dangerous Dan Kerchoo
And watching the pulse was his light of love,
The Lady that's known as "Flu."*

Thanks to the "Water Meter"
Denver Water Department

*She was a flop as a shoe clerk. When
a customer asked for alligator shoes, she
said, "What size is your alligator?"*



"I'm going to explain all this to you only once, so listen carefully...!"

STELLABOTTE TOPS BOWLING LEAGUERS

Some eye opening scores are emerging from the current season of the men's bowling league.

With the tallies for the first half of the season in, Joseph Stellabotte, of the Design Branch, looms as the top man for the three game high series. His score was 579. Al Gionta, of the Meter Shop, was a close second with 565.

Gionta also knocked down the single game high (225) and the high average (162). Al Strouse, of Design, had the second single game high (219), while Stellabotte added the second high average (159) to his laurels.

With four teams in the rolling during the first half, Meter Truck finished on top with 32 victories and 20 losses. The other three teams, fielded by Design units, finished as follows:

Teams	Wins	Losses
Distribution	30	22
Structural	22	30
Main Sewers	20	32

Second half games, running until June, are now under way.

Team players are:

Meter Truck: Al Gionta, John Liberatore, Joseph Penczak, and Russell Thomas.

Distribution Designers: Tony Di-Luzio, Mark Lalli, Fred Miami, and Joseph Stellabotte.

Structural Designers: Colston Black, Ray Cox, Harry Duffort, and Vincent Henry.

Main Sewer Designers: Mario Celoni, Al Strouse, Gene Zanier, and Alfred Kowalczyk.

COMMENT

From Paul Weir, general manager of the Department of Water Works, Atlanta, Georgia:

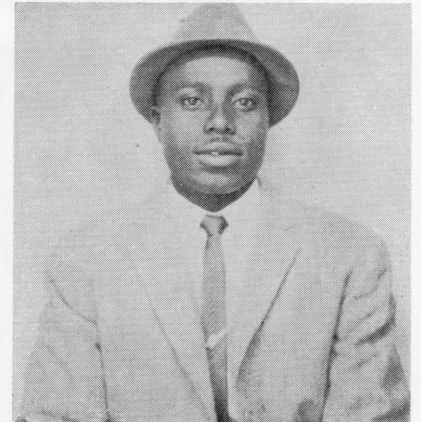
"Congratulations on . . . the anniversary of your excellent Water Department publication.

"We cherish each copy and send it throughout our entire department for ideas and study. I just wanted to let you know how much the Philadelphia *Water Department News* means to us here in Atlanta."

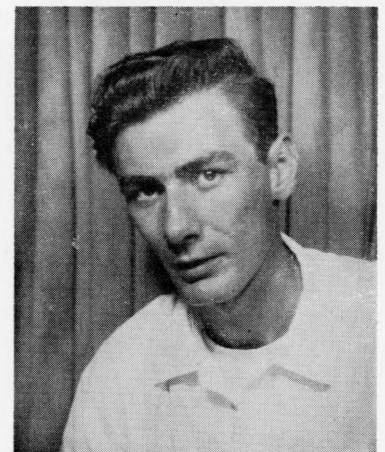
AMONG EMPLOYEES PROMOTED ARE . . .



VINCENT PUCCIO
Water Meter Foreman



ROBERT LADSON, JR.
Repairman Trainee



RICHARD V. CLOEREN
Engineering Aide III

Personal Notes

Projects Control

The Cross of St. Agnes was presented by Heritage House to Mrs. Thomas Baldwin, Sr., the mother of Projects Control's Barbara Branch on December 31 at the Academy of Music. The award was made in recognition of Mrs. Baldwin's helpful work with young people as well as for other civic activities.

Customer Service

We are proud to note that Aurelius King, Jr., son of Mrs. Marian King, complaint clerk, was honored February 11 at a dinner given for him and his fellow Boy Scouts, who worked so helpfully with the Philadelphia Association for Retarded Children at Camp Hart, Pa., last summer.

Quality Control

We are happy that Walter Ringer, chief of Quality Control and Research, is now out of the hospital where he underwent an operation.

Water Main Records

Section Chief W. Frank Scott is now the proud grandfather of a baby girl, Marianne, born to his daughter February 16. She weighed 7½ lbs.

Water Treatment

Our sincerest sympathy goes to Elwood Bean, chief of water treatment, who lost his son, James, age 19, in January after a heart operation. James was attending the Drexel Institute of Technology.

NAME 13 NEW WORKERS

Thirteen new employees have entered the department in the past few weeks. They are:

General Administration: Carolyn D. Wallace, clerk-typist II; Edward T. Engel, clerk I; Frank V. Masciocchi, accountant I; Zurn M. Winston, key punch operator I.

Belmont Plant: Raymond L. Daiutolo, chemist I, and Howard G. Skinner, laboratory technician.

Other Units: George Bryant, field inspector I, Customer Service; Wallace Amos, graduate engineer, Water Operations main office; George E. Story, chemist I, Northeast Sewage Works; Donald C. McCoy, laborer, Southeast Sewage Works; James J. Esmond, brick mason, Sewer Maintenance; Robert Webster, mechanical stores clerk, Logan Garage; and John J. Cuddy, Jr., engineering aide II, Construction Branch.

NAME WILLIAM SNYDER AUTOMOTIVE CHIEF AS ELEVEN EMPLOYEES GAIN PROMOTIONS

William R. Snyder, 11033 Bustleton Avenue, has been named automotive maintenance supervisor in charge of the department's big Logan Garage. He is one of 11 Water Department employees recently promoted from civil service eligible lists.

Mr. Snyder, who became acting supervisor last October when Frank Keough retired, has worked for the department since March, 1953. He was successively a mechanic and foreman at the garage.

Trained at automotive and electrical schools, Mr. Snyder worked for Hendri Motors for several years, and then switched to electrical repairs on Army tanks for the C.A.M. Industries. Briefly he performed signal installation for the Reading Company. He served in the U. S. Army's 35th Infantry during World War II.

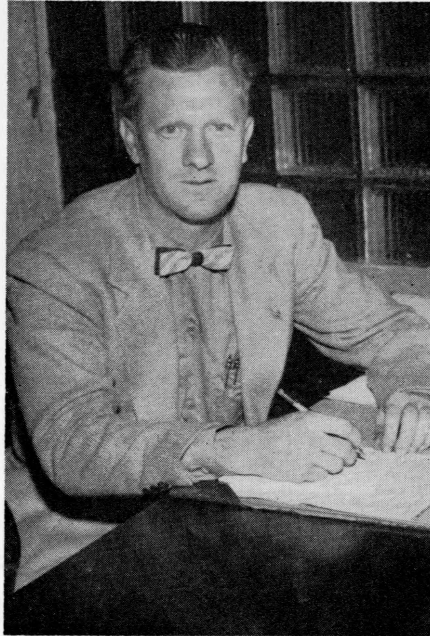
Two other employees at the Logan Garage have moved up. John F. Tancredi has stepped into Mr. Snyder's old spot as a foreman, while Oscar Barbour, a trades helper, has taken over Mr. Tancredi's duties as an automotive mechanic. Employed at the shop for a number of years, Mr. Tancredi once installed guns for the Philadelphia Navy Yard and made automotive repairs for the South Philadelphia Motor Car Company.

Puccio New Foreman

Vincent Puccio, a water meter repairman at the Meter Shop for 14 years, has been appointed a foreman of water meter installation and service. For two years during the 1940's he worked as a mechanic on paper box machines for the Globe Manufacturing Company.

A new dispatcher at the Load Control Center is Charles J. Zappolo. Mr. Zappolo was a pumping station operator for several years, and was promoted to pumping station engineer (electric) in 1957.

Other promotions include: Robert Ladson, Jr., from laborer to repairman trainee, Distribution Section; Robert V. Cloeren, from engineering aide II to III, and John H. Berninger, from engineering aide I to II, Construction Branch; Alverta English, from key punch operator I to II, Administrative Services; Harry A. Duffort, from civil engineer I to II, Design Branch; and Edward F. Hertkorn, from Hydraulic engineer I to civil engineer II, Water and Sewer Systems Planning Unit.



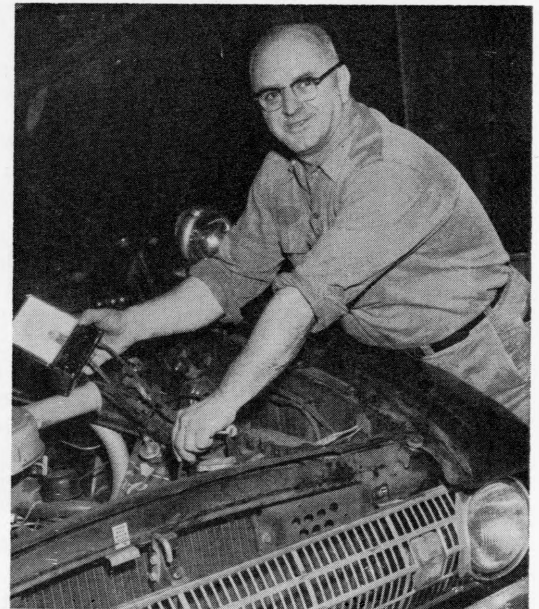
WILLIAM R. SNYDER, new automotive maintenance supervisor, is in charge of 15,000 upkeep jobs yearly on the department's trucks and passenger cars. About 3,000 jobs are preventive . . . done on a monthly schedule.



CHARLES J. ZAPPOLO
Load Control Dispatcher



EDWARD F. HERTKORN
Civil Engineer II



BIG SMILES show that Oscar Barbour (left), and John F. Tancredi have already heard the news of their promotions—to automotive mechanic and foreman, respectively, at the Logan Garage.

BASKETBALL FLASHES

The Water Department's first inter-sectional basketball tourney is now rolling across the courts.

Using a combination of zone defense and red hot shooting, the Design Branch toppled the basketballers of Administration in a game that was closer than the 50-28 score indicated.

In the opening moment, Design jumped off to a lead that was never headed, although at one point, when the score read 20-10, Administration threw a scare into the winners by closing the gap to 22-17. After that the roof seemed to cave in. Administration made 11 more points, while Design was dunking 28.

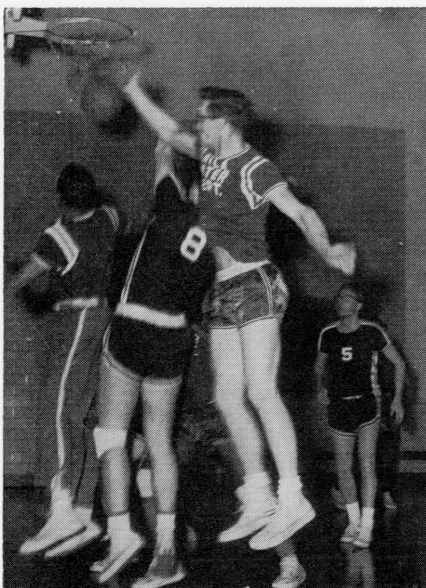
Survey Nips Design

Survey using a fast break and some great outside shooting out-pointed a good Design team 27-26. The game was nip and tuck until the final whistle. Design, at one stage behind 21-16, forged ahead with three straight baskets.

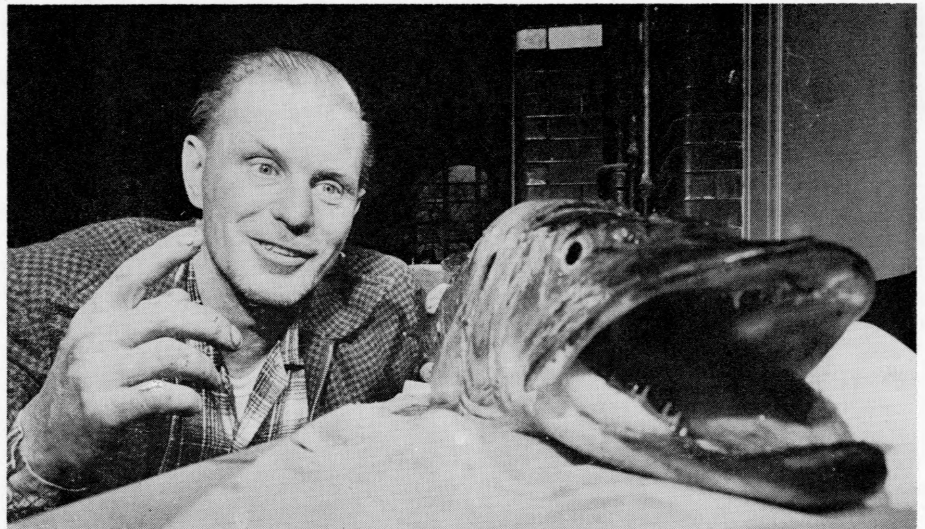
With 30 seconds remaining and the ball being brought down court by Survey, Design broke from its floating zone defense into a man to man. This was Design's undoing. The final basket was an outside shot that just *did* get into the basket.

Survey holds a 1-0 record, with Design 1-1 and Administration at 0-1. Southwest Works has not started its season.

John Mirkil



WILLIAM BAYARD, of Water Department, takes flying slap at ball during game with Bell Telephone Company which Bell won 56 to 46.



THEY COME BIG in the cleaner Schuylkill River, as this 31½ inch musky seems to be saying. James Sullivan, maintenance mechanic, is prompting the big guy after nabbing him in the Queen Lane Raw Water Pumping Station intake. Picture was snapped by Evening Bulletin and is reprinted for those who missed it earlier.

TIPS ON GARDENING

By Elwood Unruh

Gardener, Torressdale Plant

If you never have sown a seed or planted a flower, visit the Flower Show anyway. It's worth the time and cost of admission. Of course, if you are a gardener, no matter how small your endeavors may seem, you'll leave the show with a lot of new ideas buzzing around your brain.

The new seed catalogs have been sent out and those who have received them are considering what to plant this season. If you haven't received a catalog, it isn't too late to send for yours. Look in the garden pages of the Sunday papers for names and addresses.

Now the time is approaching to think about the fertilizing of the various plants including the lawn. Rhododendrons, azaleas, hollies, laurels and the coniferous shrubs and trees (yews, spruce, junipers, etc.) can be fed an acid type plant food. If you use lime on your lawn, be sure none of it reaches any of the above and other plants in this category. As soon as possible, this job of plant feeding should be done.

How To Feed Lawns

Lawns should have a 10-6-4 feeding. Usually 20 lbs. per 1,000 sq. feet in the Spring and again in the Fall. In buying and using the various fertilizers, it's much better for the uninformed to make the purchase at

a bona fide garden supply center and receive the advice of those people who know their business.

In making plans, after a long Winter, for garden activities of the coming season, it is not unusual for many enthusiastic souls to overreach themselves. By mid-summer this zeal-ousness has diminished but the work remains. What I'm trying to say is: enjoy your garden but don't become its slave.

I recall some years back, on a very hot August afternoon, grubbing weeds out of a nursery row, when some visitors came by and a very nice lady remarked to me, "One must feel very close to God, while working in the soil."

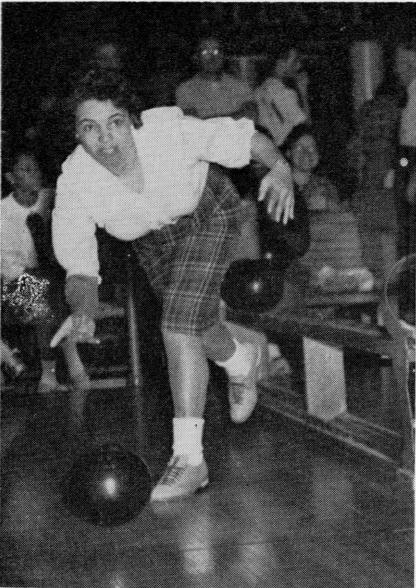
I have since felt badly about the flippant answer I made to her, "Lady" I said, "do you know that Luther Burbank, the great horticulturalist, was an atheist?"

I have since learned to appreciate the thought expressed in this bit of verse.

*"The kiss of the sun for pardon,
The song of the bird for mirth.
One is nearer God's heart in the
garden,
Than anywhere else on earth."*

Anonymous

Amen and pleasurable gardening.



ROLLING BALLS unerringly down the alleys are Barbara Johnson, top left, and Edith Frey, while team mates above study results. Onlookers are (l. to r.), first row, Lois Jenkins, Mary Bailey and Bonita Dixon; second row, Irma Foster, Elaine Stevens and Terry DiPiano. Bowling is just one of many diversions offered women in the Employees' Recreation Association. Besides discounts for plays, movies, etc., women may set up teams for any of the sports. The association provides much equipment.

BOWLERS MULTIPLY AS WOMEN ORGANIZE

Women of the department are fielding six bowling teams, and there will be more to come as part of the new women's bowling league set up early in February.

With a men's league already functioning, 30 women employees have moved in a big way to show that males have no corner on bowling prowess. The new women's teams, representing scattered departmental units, bowl every Wednesday at 5:30 p.m. at 1005 Market Street.

Early scores foreshadow strikes to come: Mary Perry, of Distribution, got 157 for the high singles; Elaine Stephens, of Administration, racked up 373 for the high series, and she tied Teresa DiPiano at 118 for the high average.

Women employees desirous of bowling may contact Miss Stephens or Miss DiPiano, ext. 3808. Here is the line-up of teams:

Annex: Dorothy Kutys, Marie Grant, Dorothy Watson, Florence Graham, and Shirley Easley.

Distribution: Mary Perry, Ann Freed, Marilyn Josie, Aggionora Harrison, and Margaret Jenkins.

29th and Cambria: Edith Frye, Carol Shannon, Zurn Winston, Ursula Wilson, and Carole Threadgill.

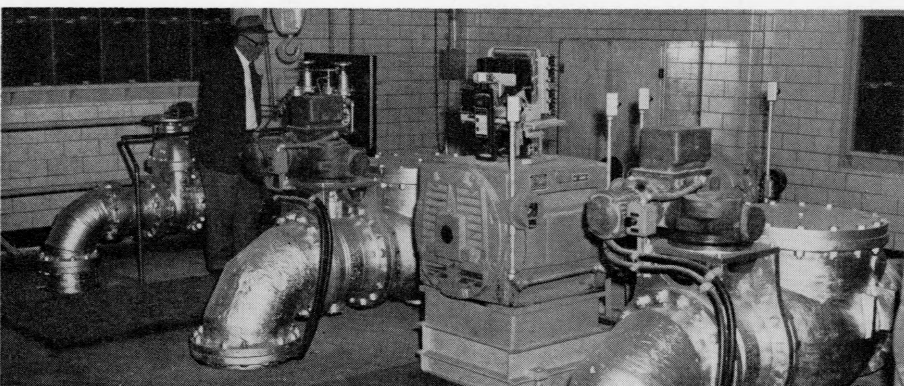
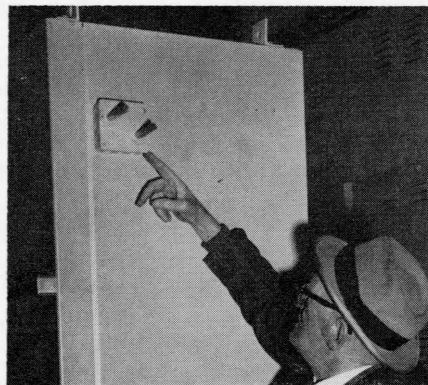
Design: Hester Walker, Barbara Johnson, Rachel Bleiberg, Peggy Haley, and Hilda Schmukler.

Field: Rosemary Giordano, Irma Foster, Ethelyn Pitts, Bonita Dixon, and Mattie Hooker.

Administration: Mary Bailey, Thelma Cavener, Teresa DiPiano, Elaine Stephens, and Goldie Jenkins.

The new league is sponsored by the Water Department Employees' Recreation Association.

NEW UNMANNED WEST OAK LANE PUMPING STATION gets going over by Engineer C. George Walton, of Construction Branch. The \$352,000 station, which will be ready for operation this spring, will pump purified Delaware River water into the Northwest. Its pumps and valves, below, will be remotely operated from the new Load Control Center via microwave. At right Mr. Walton points to "plugs" which sense temperature in the station for the Load Control Center.



WATER DISPLAYS SUPPORTS NATIONAL ENGINEERS' WEEK

Gracing the 30th Street Station of the Pennsylvania Railroad during National Engineers' Week, February 18-24, was one of the Water Department's large lighted displays. The exhibit, replete with color transparencies and explanatory captions on the improvements in the water system, was placed there as part of the Engineer's Week theme, "Economic growth through engineering."

CRANES RESHAPE BELMONT PROFILE

Across the street is a large institution. Its premium look-out spots are on the second, third and fourth floors by the windows.

The topic of discussion among the 500 residents is the changing profile of that plant across Belmont Avenue.

"What's happening? Gosh! Will you look at that crane go! Holy Gees, what a fallout shelter that cave would make."

Yes, friends and neighbors, the work on Belmont's new plant is rapidly picking up speed. We who have known Belmont for more than a decade are experiencing a nostalgic feeling as the familiar facades of 57 years are being removed, exposing almost shamelessly the innards of a system that has served faithfully.

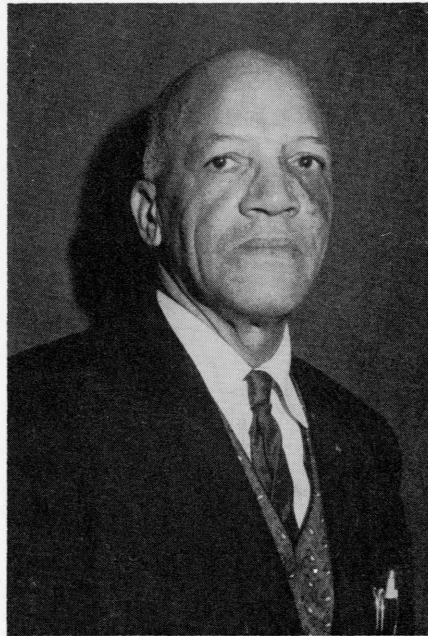
As the work progresses and the autopsy on the inanimate framework of Belmont exposes that which hasn't been visible, the true beauty and wizardry of architectural genius of yesteryear is apparent.

As the old makes way for the new at Belmont, the changing profile might look like anything but a water treatment plant. The new six story chemical building will never be identified as such. In fact one might easily mistake it for a modern office building. Perhaps that which will be most misleading will be the handsome, rectangular sedimentation basins, which will present as convincing an invitation to go swimming as any tourist attraction. But one thing is sure: the beautiful new plant will carry the department far toward its goal . . . a quality water that is above reproach. Perhaps this will gladden the hearts of all our neighbors.

New Water Quality Center

One phase of the remodeling underlines this goal. This innovation, located on the court, is an attractive one floor building that will soon be the headquarters of the Quality Control and Research Section. Its staff composed of engineers and chemists, will use a maze of modern electronic laboratory instruments, monitoring equipment, and the latest research techniques. In the newly refurbished edifice, "quality" will be the password.

The compact interior will consist of three office spaces, which will be the hub of widespread activities. Feeding from them will be a special project research lab; a general lab;



MARCELLUS W. LLOYD

LLOYD RETIRES AFTER 24 YEARS

Marcellus W. Lloyd, mechanic helper at the Lardner's Point Water Pumping Station, has written "finis" to 24 years of service with the City.

Mr. Lloyd, who will be 69 in April, worked as a laborer and steam fireman for the old Water Bureau, and at one time ran a paper cutting machine for a printing company. Long active in church affairs, Mr. Lloyd is secretary of the board of deacons and clerk of the church at Miller Memorial Baptist, 1518 North 22nd Street. He plans to continue working part time. Married with five children, he lives at 1415 North 21st Street.

SOUND BODIES IN SOUND JOBS?

Could Water personnel be happy as well as healthy?

The department's sick leave use in 1961 averaged only eight days per employee . . . the lowest rate for any non-uniformed City department with more than 40 employees. At the same time personnel turnover was only 9.7%, a decrease of 2.8% from the year before.

a specially appointed instrument room; a bacteriological room; a fume hazard room; a unique taste and odor room, and miscellaneous areas.

Richard Pinder,
Quality Control

Current Plays

Reviewed by Paul Siegel
Construction Branch

"All American," which just closed in Philadelphia but can still be caught in New York, has all the ingredients that a hit musical comedy requires. The show has an abundance of excellent talent, music, humor, and color. It has, however, no definite shape or form or a specific point of view.

Ray Bolger is excellent as Professor Fodorski, an immigrant who comes to America to teach engineering only to find the average college student more interested in social activities and sports than education. He proceeds to teach and have other subjects taught in terms applicable to football. Unfortunately, most of the characters, ingratiating as they may be, are kicked around like footballs and pop in and out without sufficient identification or purpose.

The role of the Professor, as presently written, is inclined more toward caricature than character. Rounding out an excellent cast of co-stars are Eileen Herlie, as the sympathetic dean, Ron Husmann and Anita Gillette, epitomizing typical college students, and Fritz Weaver, in a superfluous role dragged into the second act without significance.

The major asset of the production is the music by Charles Strouse and Lee Adams. The opening numbers "Melt Us" and "What A Country" serve to introduce the incoming immigrants to our country, but somehow, after finding their way into the plot, all but the protagonist get lost in the shuffle.

Poise: The ability to continue talking while the other fellow picks up the check.

The test of being a good host is how well the departing guest likes himself.



"Congratulations, Ramsey. We've adopted that suggestion you submitted, and it's worked out so well we find that we can eliminate your job entirely."