



CITY OF PHILADELPHIA
MICHAEL NUTTER, MAYOR
BERNARD BRUNWASSER, COMMISSIONER

DOBSON RUN
FLOOD RELIEF TUNNELING
PROJECT

KELLY DR., FERRY AVE.,
& SCOTTS LN.
STORM WATER RELIEF

CONTRACTOR: JPC GROUP
CONTRACT: S-5261-FRD

Photographs taken June 15, 2010

by

Adam Levine, Historical Consultant, PWD

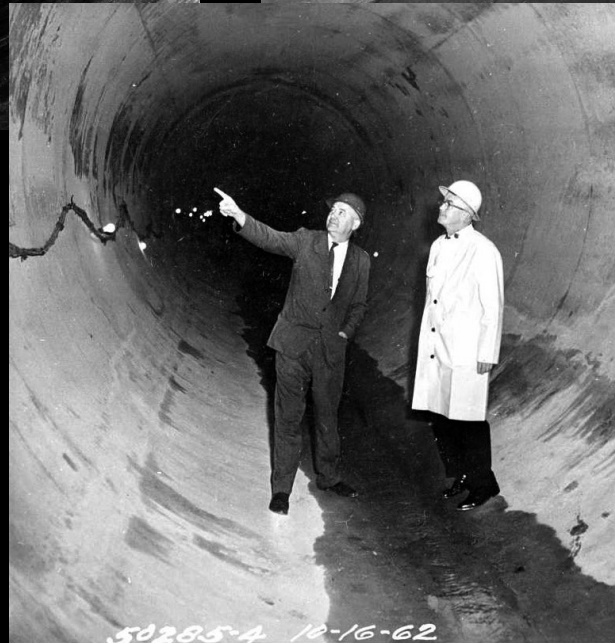
For more information about Dobson's Run and the sewer that replaced it, visit WaterHistoryPHL.org

I have been down in various sewers in Philadelphia four times. Dobson's Run was the only sewer I was in before it was completed.



*Writer in a sewer. Take note of the fanny pack.
Was this saggy pouch every really fashionable?*

Samuel S. Baxter, commissioner of the Philadelphia Water Department from 1952 until 1972, loved getting first-hand looks at the major pipes being built during his tenure.





These scenes show the top of the shaft through which much of the construction work was done. The crane in the bottom picture lowered the yellow cage down into the pipe as a makeshift elevator. The shaft was sealed off once the 12.5 foot diameter pipe was completed.



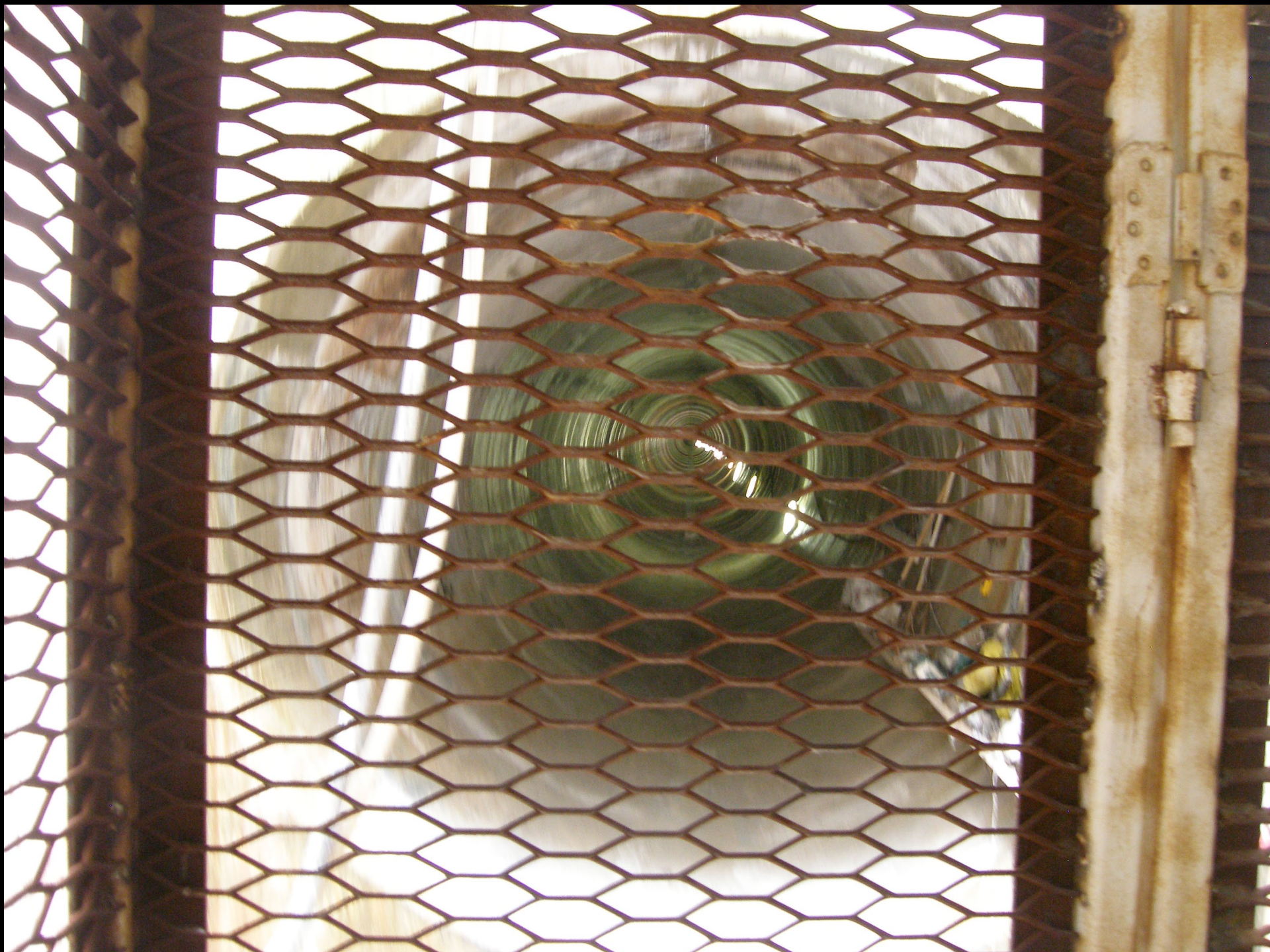
























⑪

17-57.6









